

CANTERBURY ECONOMIC INDICATORS – MAY 2012

Objective

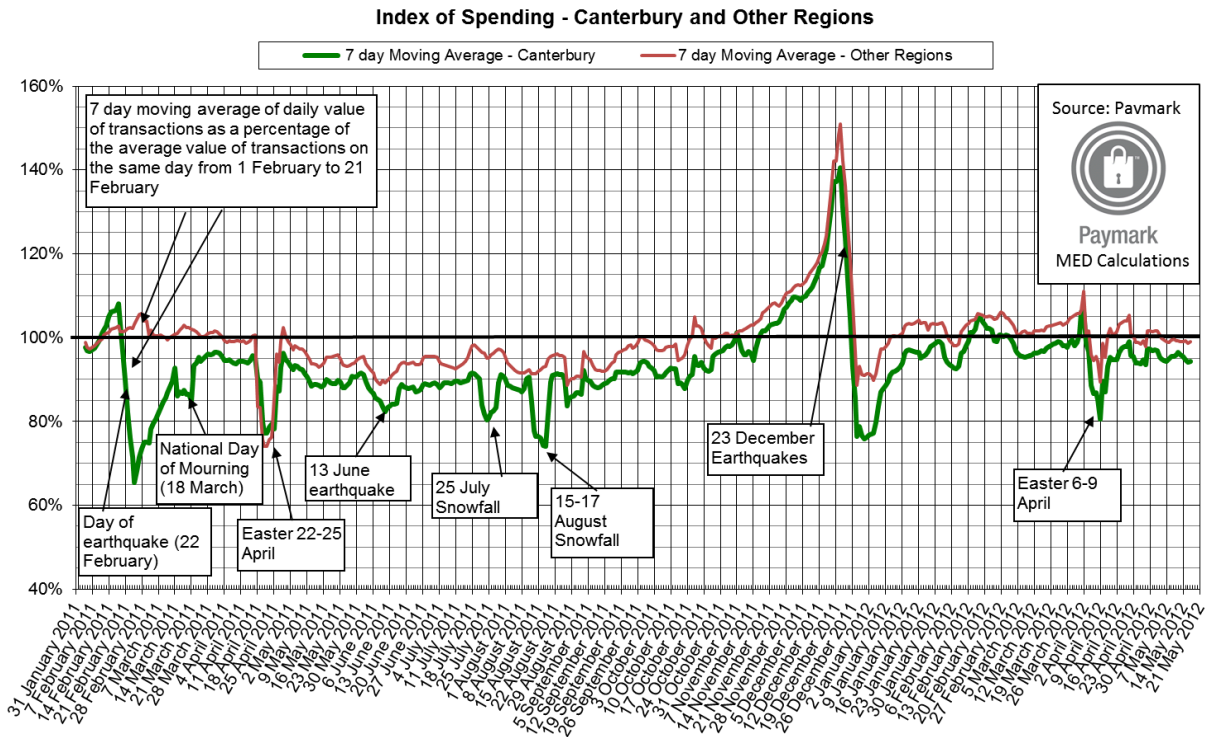
The Canterbury Economic Indicators track economic activity in Canterbury following the earthquakes. This release largely focuses on activity through to the end of March 2012 and with some April data.

Key Observations

Economic activity within the Canterbury region has been consistent in this period (March and some early April) with previous periods. Parts of the economy have continued to show resilience while others continue to be impacted.

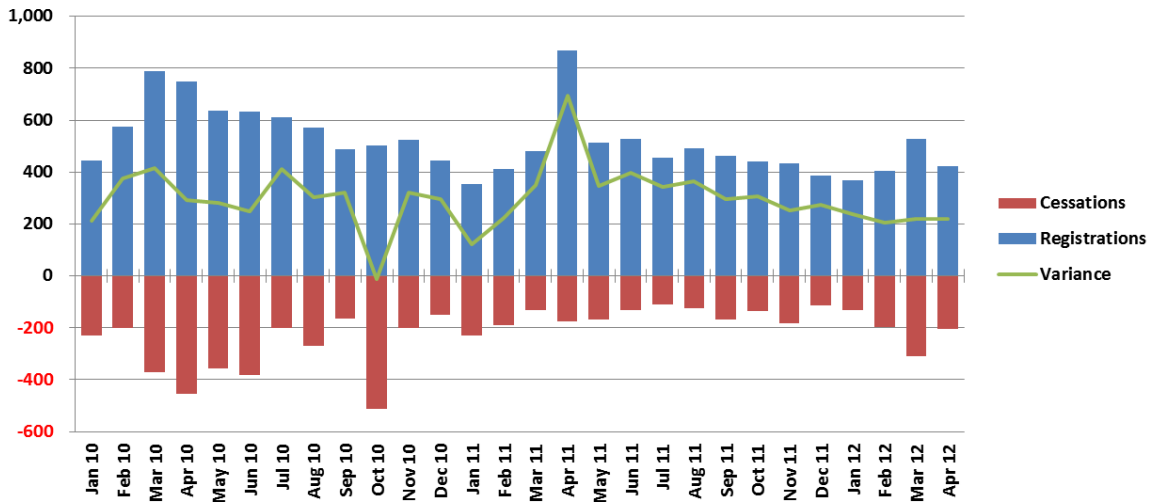
Paymark payment data

- The index of Canterbury EFTPOS transactions continues to sit below the rest of the country at 5 per cent



Business Registrations and Cessations

- 424 new businesses registered in April. This is 100 fewer businesses than registered last month and less than half of April 2011's registrations. 203 businesses ceased trading in April. This is the highest number of cessations since January 2011, with the exception of last month. To date, only three companies have ceased trading since the September earthquake compared to more than 2,500 trusts and over 670 partnerships.



Source: Inland Revenue

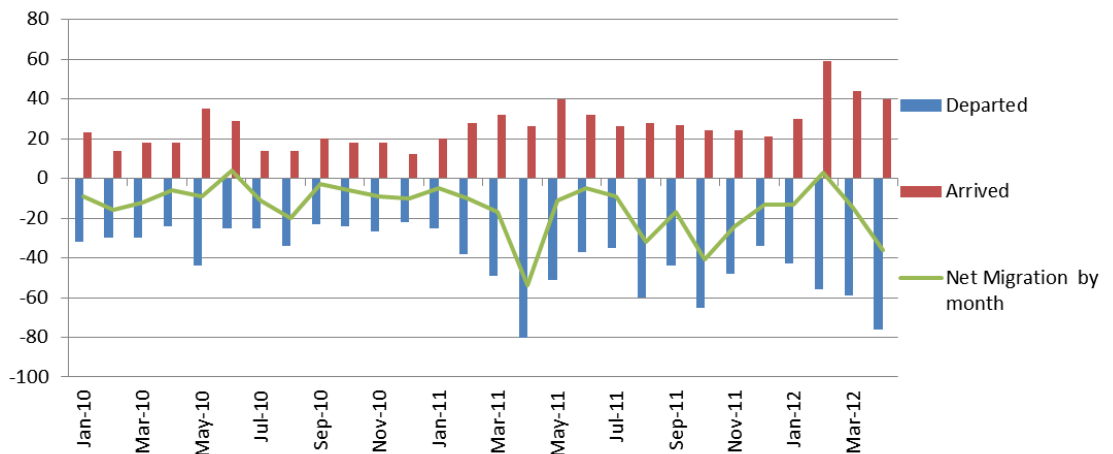
Disclaimer:

This information originates from tax data supplied by Inland Revenue to the Ministry of Economic Development under the Tax Administration Act. The tax data is reliant on pro-active taxpayer disclosure to Inland Revenue and hence the data may not represent the complete picture.

The material provided by Inland Revenue in this report may be reproduced and published without further licence, provided the source is acknowledged, the material is reproduced accurately and the above disclaimer statement is included.

Business Movement – Migration from the Canterbury Region

- April saw a net loss of 36 businesses for the Canterbury region. This is the highest negative net migration since October 2011 and ends 5 months of more businesses arriving in Christchurch than departing.



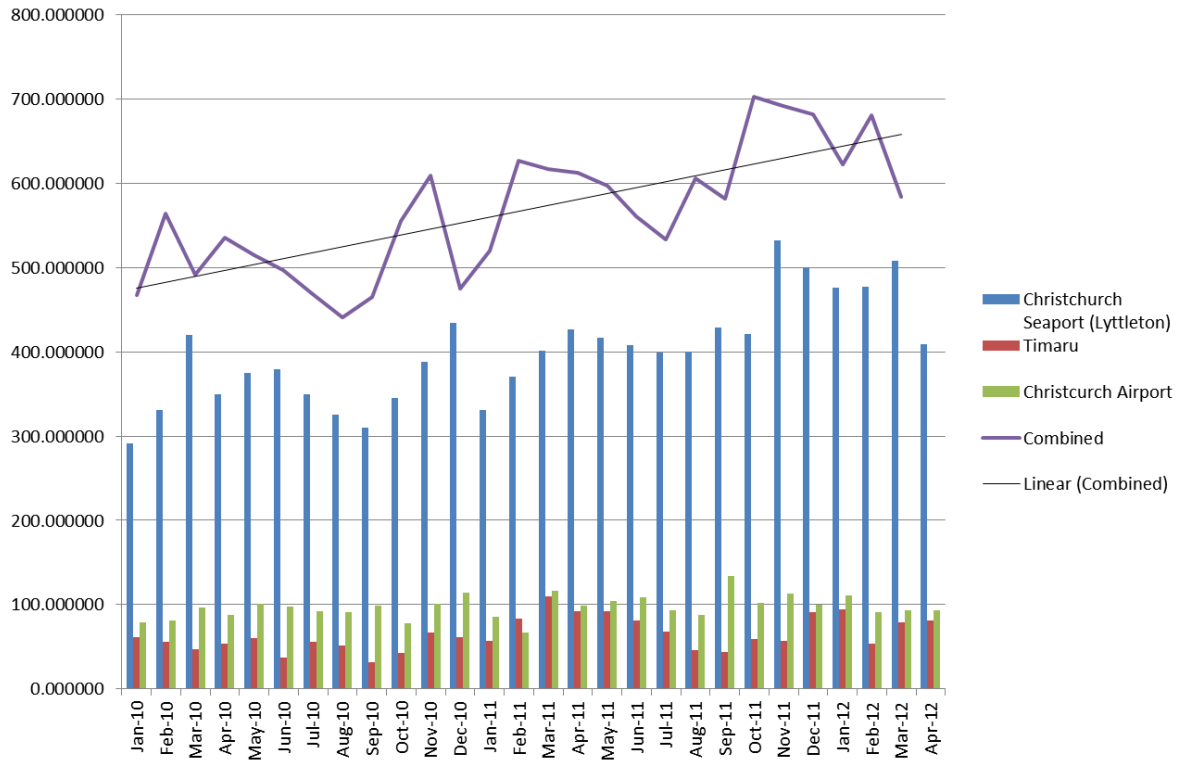
Source: Inland Revenue

Disclaimer:

This information originates from tax data supplied by Inland Revenue to the Ministry of Economic Development under the Tax Administration Act. The tax data is reliant on pro-active taxpayer disclosure to Inland Revenue and hence the data may not represent the complete picture. The material provided by Inland Revenue in this report may be reproduced and published without further licence, provided the source is acknowledged, the material is reproduced accurately and the above disclaimer statement is included.

Volume of Exports / Imports from Ports (\$NZ)

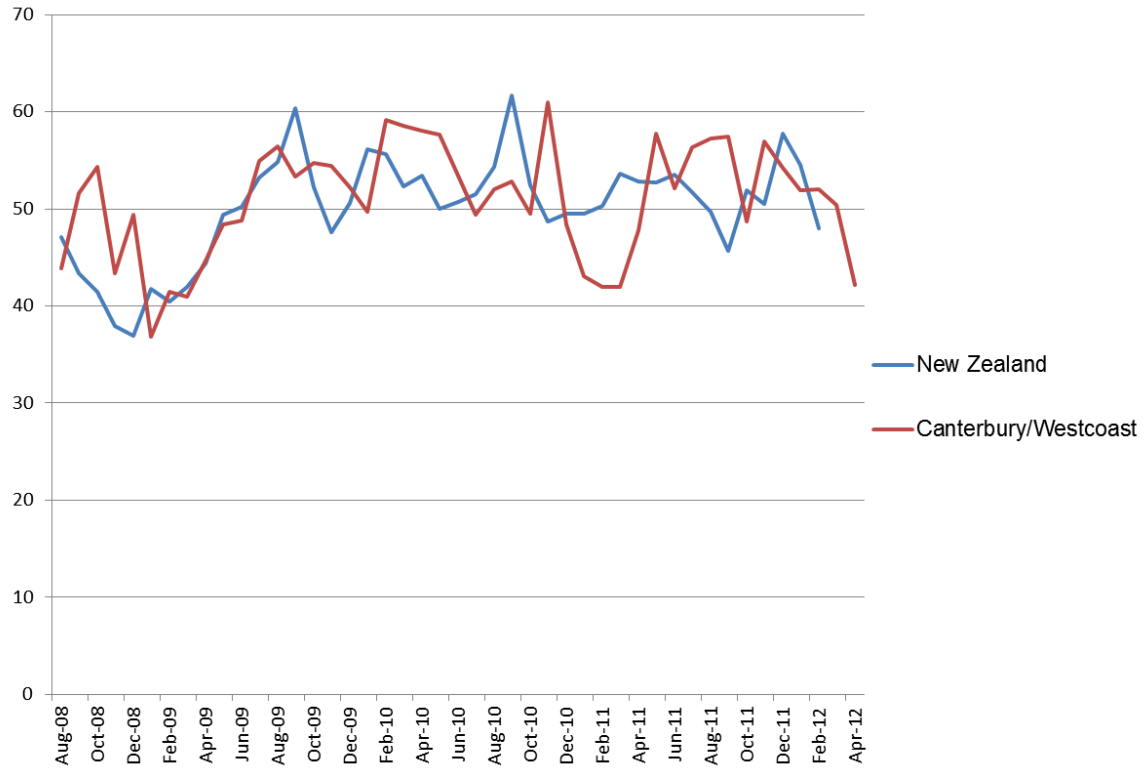
- Exports and imports for all three Canterbury ports were down by 5 per cent in April 2012 compared to April 2011. The Lyttelton Port was down 4.1 per cent to \$408m compared to \$426m in April 2011. Timaru was down 12 per cent to \$81m from \$92 in April 2011, however the port was up 2 per cent from last month. Christchurch Airport was down 5 per cent in April 2012 to 94m from \$98m in April 2011. This should be put in the context of New Zealand's total exports being down 17 per cent for the month.



Source: Statistics New Zealand

BNZ – Business New Zealand: Performance of Manufacturing Index

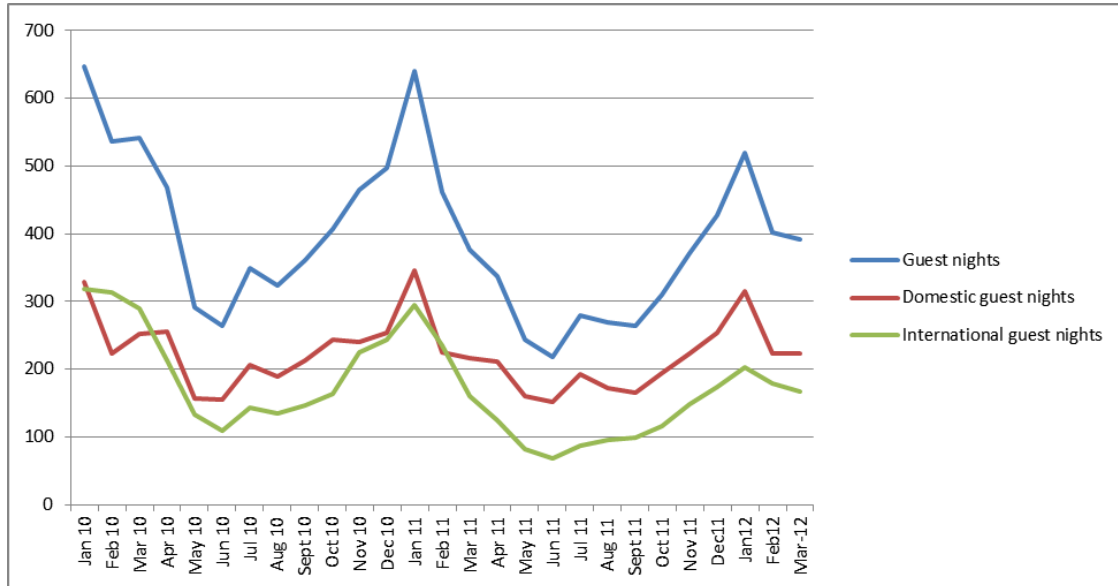
- The BNZ-BusinessNZ seasonally adjusted Canterbury/Westland Performance of Manufacturing Index (PMI) region fell to its lowest result since March 2011 at 42.2. The PMI for New Zealand in April stood at 48.0, which was 5.8 points down from March and the lowest level of activity since November 2011.



Source: BNZ & Business New Zealand

Regional Guest Nights - Canterbury

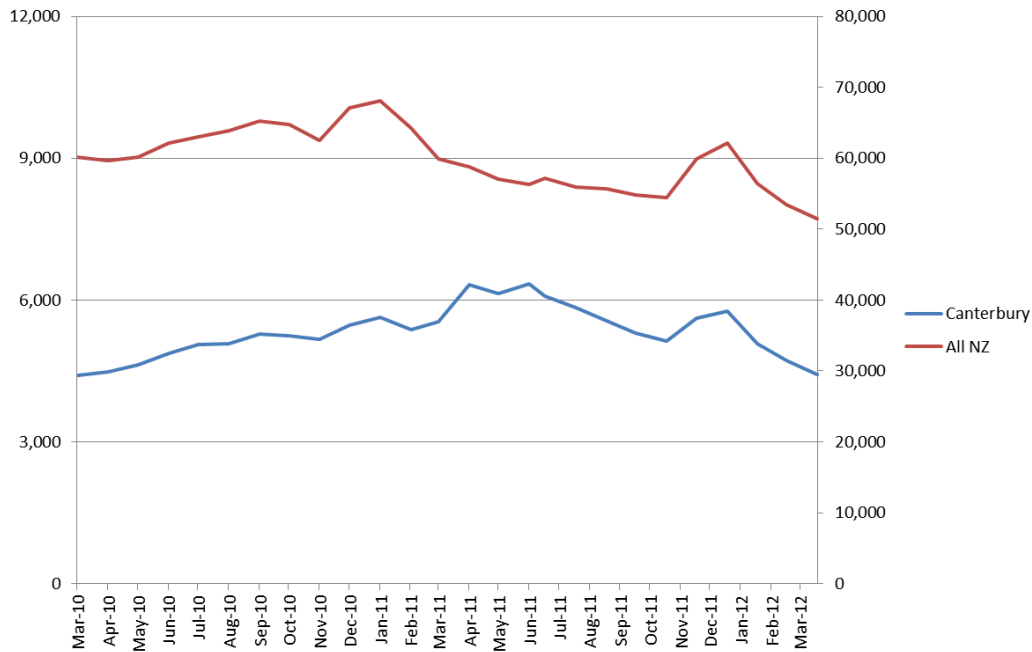
- Canterbury was the only South Island region where guest nights rose (up 15,000 or 3.9 per cent) compared with March 2011. However, guest nights were down in March 2011 due to the devastating February earthquake in Christchurch. Hotel guest nights in Canterbury are still at half their pre-earthquake level.



Source: Statistics New Zealand

Unemployment Benefit Recipients in Canterbury and New Zealand

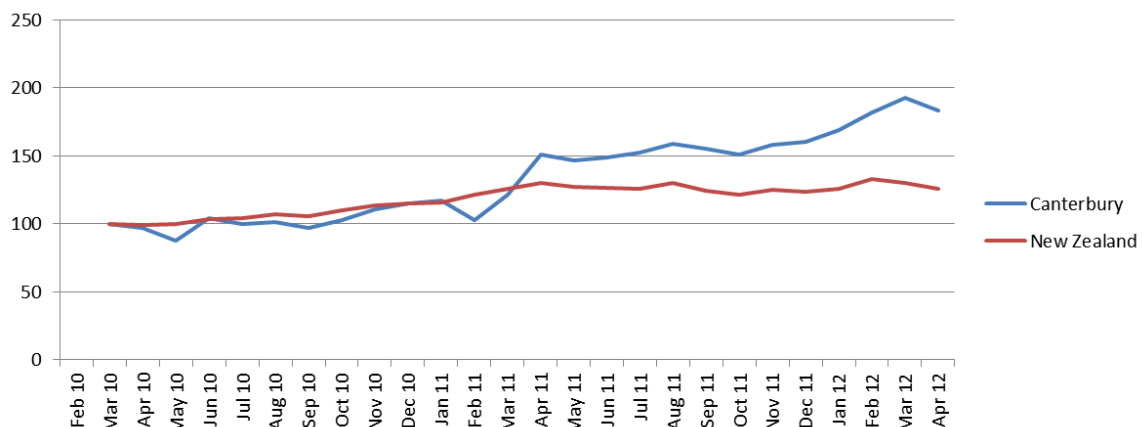
- The number of people receiving the Unemployment Benefit in Canterbury is now well below that just after the February earthquake. The April total is 5 per cent more than March. With 4,425 people on the Unemployment Benefit it is at a level last seen in mid-2010.



Source: Ministry of Social Development

Jobs Advertised Online

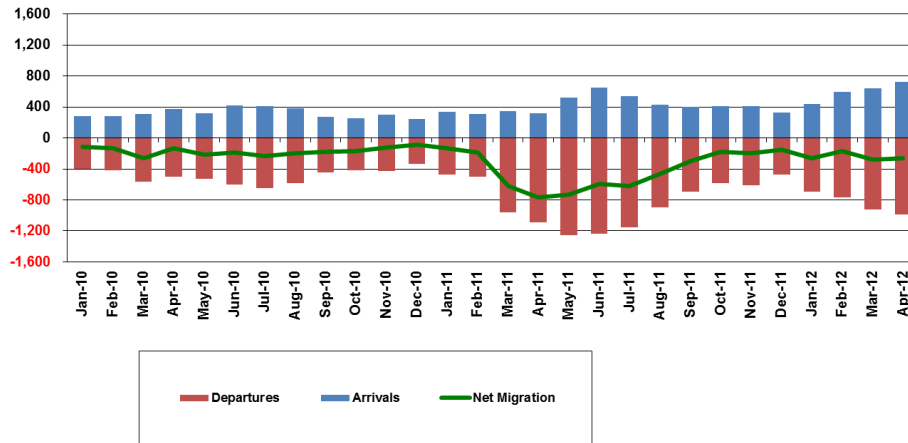
- April 2012 has seen a 5 per cent decrease in the overall jobs advertised online in Canterbury in compared to last month, compared to a 3 per cent decrease in job adverts throughout New Zealand. However, the levels for Canterbury are consistently higher than the levels for the rest of New Zealand and are now 45 per cent higher.



Source: Department of Labour

Movement of Individual Taxpayers Away from Canterbury

- A total of 260 individual tax payers left Canterbury in April, which is a third less than April 2011. This is the third month this year that has seen more individual taxpayers leave the region than come into the region.



Source: Inland Revenue

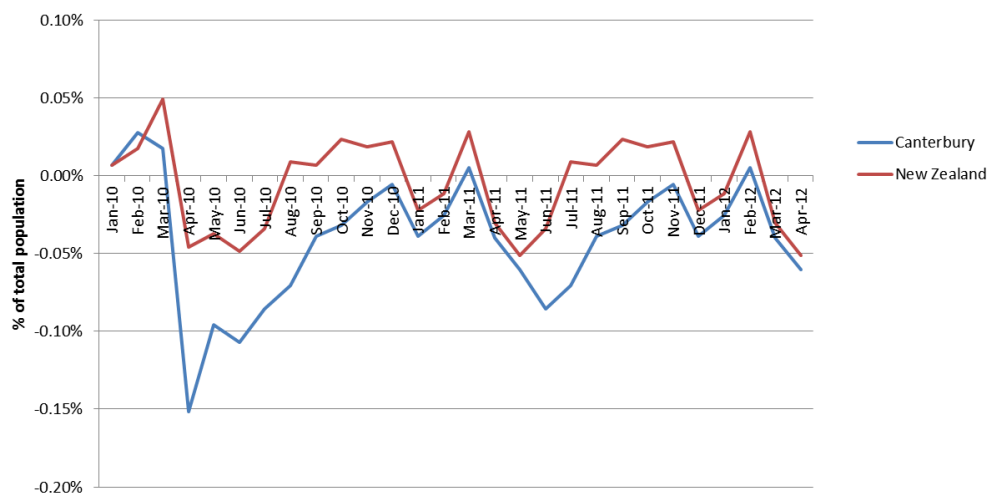
Disclaimer:

This information originates from tax data supplied by Inland Revenue to the Ministry of Economic Development under the Tax Administration Act. The tax data is reliant on pro-active taxpayer disclosure to Inland Revenue and hence the data may not represent the complete picture.

The material provided by Inland Revenue in this report may be reproduced and published without further licence, provided the source is acknowledged, the material is reproduced accurately and the above disclaimer statement is included.

Net International Migration

- In April 2012, 600 Christchurch residents moved overseas. After the February 2011 earthquake, 800 Christchurch residents moved overseas in April 2011, well up from the 400 the previous April. Four hundred migrants arrived from overseas to settle in Christchurch in April 2012, the same as April 2011, but below the 500 in April 2010.

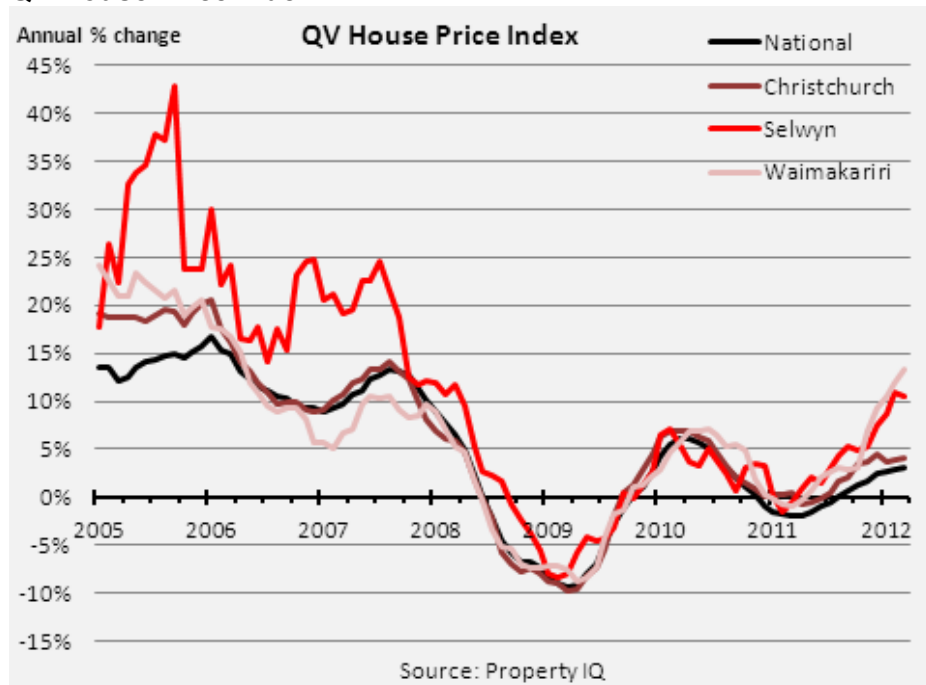


Source: Statistics New Zealand

Private Housing Market

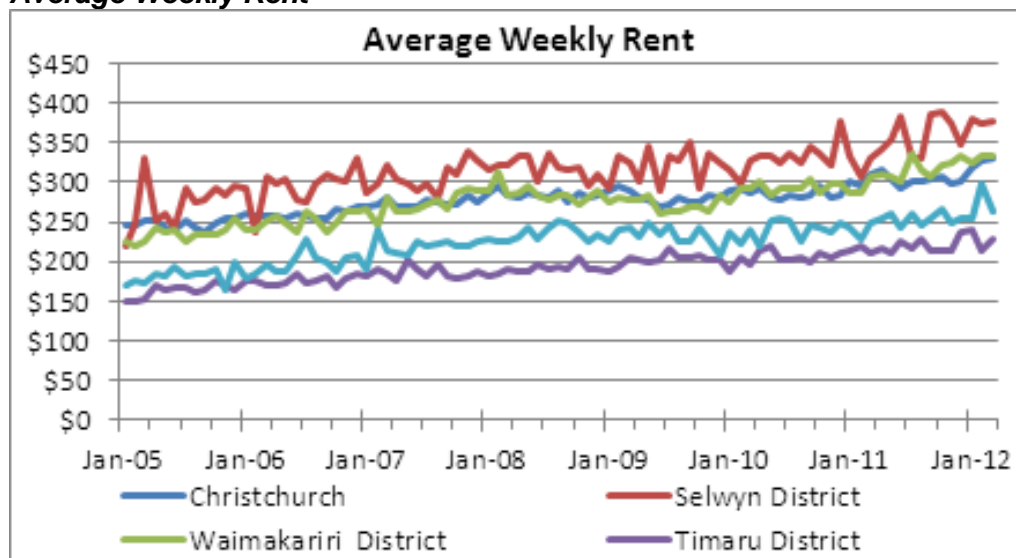
- The entire Canterbury Region has seen increases in house prices since late 2010, shortly after the first earthquake. This is a distinct break from the trend up to that point. Rents in Christchurch City, Selwyn District and Waimakariri District have risen since the February 2011 earthquake and appear to be continuing to rise.

QV House Price Index



Source: Department of Building and Housing

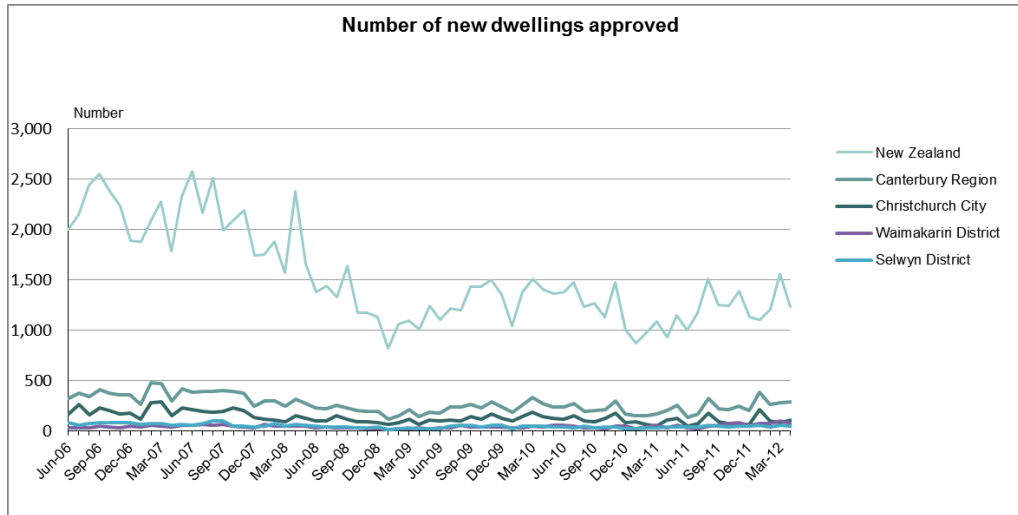
Average Weekly Rent



Source: Department of Building and Housing

Number of new dwellings approved

- The number of new dwellings consented in the Canterbury region increased significantly, up 84 (42 per cent) in April 2012 compared with April 2011. This increase partly reflects the low number of dwellings consented last year, likely due to the major earthquake on 22 February 2011. The majority of the consents were for dwellings located in the districts surrounding Christchurch city.



Source: Statistics New Zealand