

Community Forum
Private Bag 4999
Christchurch 8140

Meeting notes for the meeting of the CERA Community Forum
Thursday 6 June 2013, 6.00pm
Canterbury Club, 129 Cambridge Terrace

Present:

Community Forum members:

Lynne Ball, Richard Ballantyne, Belinda Charteris, Weng Kei Chen, Gill Cox, Peter Jenkins, Paul Lonsdale, Deborah McCormick, Trevor McIntyre, Lesley Murdoch, Jocelyn Pappill, Faye Parfitt, John Peet, Bruce Russell, Patricia Siataga, Emma Twaddell, Brian Vieceli, Rachel Vogan, John Wong

Apologies

Leah Carr, Leanne Curtis, Maria Godinet-Watts, Tom McBrearty and Suzanne Vallance

Chair

Darren Wright

In Attendance

Hon Amy Adams, Associate Minister for Canterbury Earthquake Recovery (Items 1-5 only)

Roger Sutton, Chief Executive, Canterbury Earthquake Recovery Authority (Items 1-7 only)

Hugo Kristinsson, TC3 Resident's Group (Item 3 only)

Jane Bryden, Office of the Hon Gerry Brownlee, Minister for Canterbury Earthquake Recovery (Items 1-7 only)

Amanda Shaw, Senior Advisor, Office of the Chief Executive, CERA (Items 1-7 only)

1. Notes Of The Last Meeting

Moved

That the meeting notes from the 16 May 2013 meeting be confirmed [subject to the change noted in item 2 below] as an accurate record.

Carried

2. Matters Arising

The Forum agreed to form a sub-group to prepare feedback/advice for the Minister on the draft Natural Environment Recovery Programme for greater Christchurch, and that the draft 16 May 2013 meeting notes should be amended to reflect this.

ACTION: Sub-group to prepare feedback/advice on the draft Natural Environment Recovery Programme for members to consider and submit to the Minister for Canterbury Earthquake Recovery before the next meeting (20 June).

3. Presentation by Hugo Kristinsson – TC3 Residents' Group

On behalf of the TC3 Residents' Group, Hugo Kristinsson gave a presentation outlining concerns about repairs for TC3 property owners, and in particular consenting processes and liability issues associated with repairs in the TC3 zone. The presentation focussed particularly on the South Brighton area.

Mr Kristinsson's presentation highlighted concerns and confusion about:

- the status of the "PMO guides" and a lack of clarity in relation to the provisions of the Building Act 2004
- difficulties for property owners in accessing relevant technical information in order to make informed decisions about repairs
- a lack of clarity about exemptions to standard consenting processes for earthquake repairs
- a lack of clarity about liability for substandard repairs
- insurance companies offering property owners cash settlements for repairs and the implications of this.

Discussion:

- Minister Adams and Roger Sutton noted that the PMO guides cannot override legislative and consenting requirements.
- D Wright noted that his understanding was that some repairs do not require building consent, for example, exemptions under section 41(c) of the Building Act 2004 and that this might be the condition under which some works are being carried out. D Wright further clarified that section 41(c) is only supposed to be used for dangerous buildings and even then must be followed up by a retrospective consent with the CCC.

Follow up:

- Mr Kristinsson offered to forward specific examples to CERA of:
 - properties where there have been significant structural repairs to dwellings without geotechnical assessments being undertaken or without consents having been applied for
 - Insurers seeking to cash settle TC3 properties.
- Roger Sutton undertook to look into the concerns raised, and the specific examples once provided, and provide a response to Mr Kristinsson and the Community Forum.

Roger Sutton also noted that Mr Kristinsson's presentation had highlighted that the community needs clearer information about the TC3 repair process so that property owners can make informed decisions, and CERA will consider how it can help with this.

- D Wright noted that the Community Forum needs to seek a better understanding of section 41 of the Building Act 2004 and how this is operating in the TC3 repair context.

ACTION:

Roger Sutton to look into the concerns raised by the TC3 Residents' Group and provide a response and further information to Hugo Kristinsson and the Community Forum

D Wright to add to the Community Forum's work programme a project to research and understand section 41 of the Building Act and how this operates in the TC3 repair context.

4. Presentation by Emma Twaddell – St Albans Residents' Association

E Twaddell gave a presentation on the history of the St Albans area, and the role that the St Albans Residents' Association has played in developing community facilities and advocating for residents:

- St Albans residents built community facilities through gifts of land and resources, fundraising and sponsorship, and volunteerism. Many of the local institutions are more than 100 years old.
- The St Albans Residents' Association (SARA) has been an important and successful service for the community, providing community facilities, supporting community groups, providing advocacy support, and proactively finding solutions for the area.
- The St Albans Community Centre was demolished following the February 2011 quakes and SARA has not been able to reoccupy the site.
- The relationship between SARA and the Christchurch City Council had broken down prior to the earthquakes, and in her opinion is now virtually non-existent
- SARA has developed a community strategy for the next 20yrs.
- Suggested that CERA needs to pay more attention to recovery in the suburbs, not just the central city.

Discussion:

- Roger Sutton noted that CERA is a recovery agency which will only be in place for another three years. He questioned the merit of CERA managing relationships which would continue long-term, and suggested that the underlying issues need to be addressed between the relevant parties.

5. Presentation by Bruce Russell – Recovery in the Selwyn District

B Russell gave a presentation on recovery progress in the Selwyn district:

- Selwyn experienced the strongest economic growth of any district in New Zealand last year and the strongest growth in population and employment.
- Post-earthquakes the district has welcomed many new residents and Selwyn District Council and the communities have provided strong support for the newcomers.
- New facilities have been established to support the growing community (for example, the Selwyn Aquatic Centre and the Lincoln Events Centre).
- Selwyn is a fast growing area – there is land available to accommodate new sections, lots of construction activity underway, and the Selwyn District Council's consenting team is working hard.

6. Presentation by Brian Vieceli – The hospitality sector

B Vieceli gave an introduction to the role of the hospitality sector in greater Christchurch's recovery and noted that:

- there needs to be a balance between the wants and needs of the suburban communities and the commercial sector and central city investment because they are inter-related when it comes to recovery
- the sector recognises its responsibilities and interests in the wellbeing of the residents of greater Christchurch.

B Vieceli requested the opportunity to give a more detailed presentation at a future meeting including representatives from the hospitality sector. The Community Forum supported this proposal.

ACTION:

B Vieceli will invite representatives of the hospitality sector to participate in a presentation to the Community Forum at an upcoming meeting

7. General Discussion

- D Wright noted that he has discussed and confirmed with Warwick Isaacs having an update on the CCDU work programme as an agenda item in the next few weeks.
- CERA confirmed that the requested presentation on trends in psycho-social wellbeing is also being arranged.

8. Rotation discussion

Withheld under section 9(2)(f)(iv)

9. Next Meeting – Thursday 20 June 2013, Canterbury Club, 129 Cambridge Terrace

Meeting closed at 20:05.

RELEASES
OFFICIAL INFORMATION ACT 1982

A Community
of Interest

St Albans
Christchurch

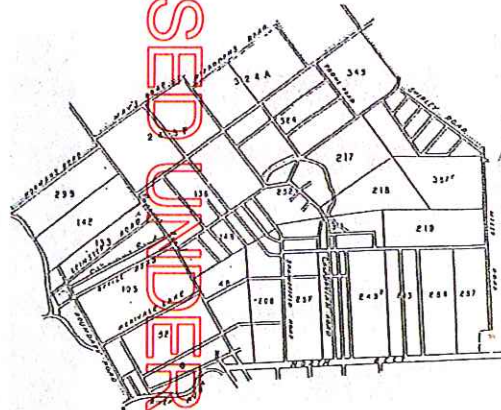
The Golden
Suburb



The Beginnings of St Albans.

**Pre Borough Days
1850 - 1881**

During the 1850s and 60s the area later know as St Albans was made up of rural sections.



Map of the Rural Sections (from the Black Map) at 1856.

Map of the Rural Sections (from the Black Map) at 1856

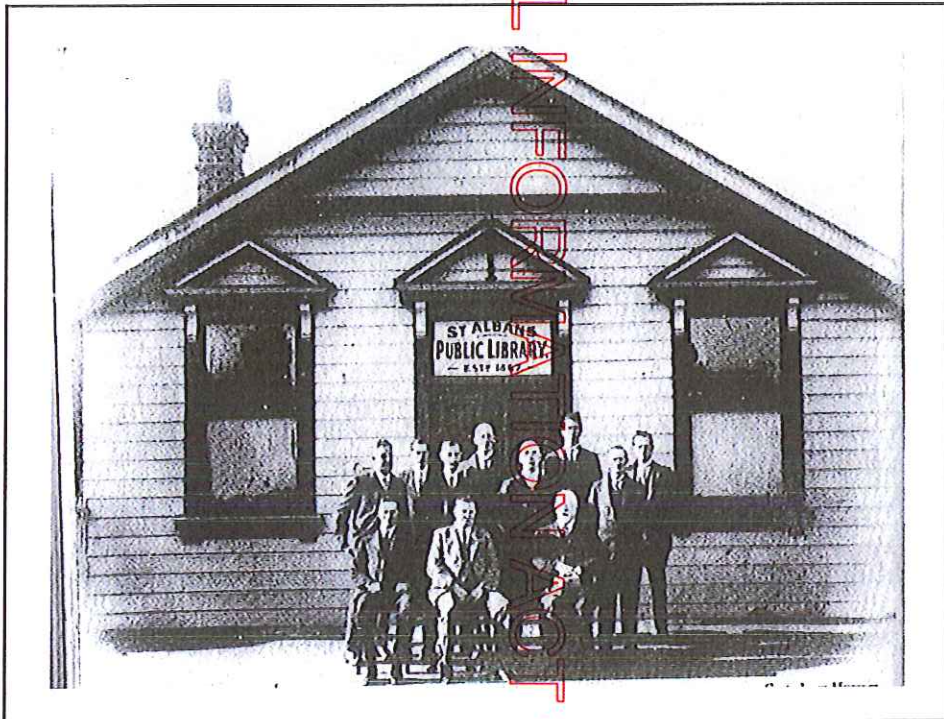
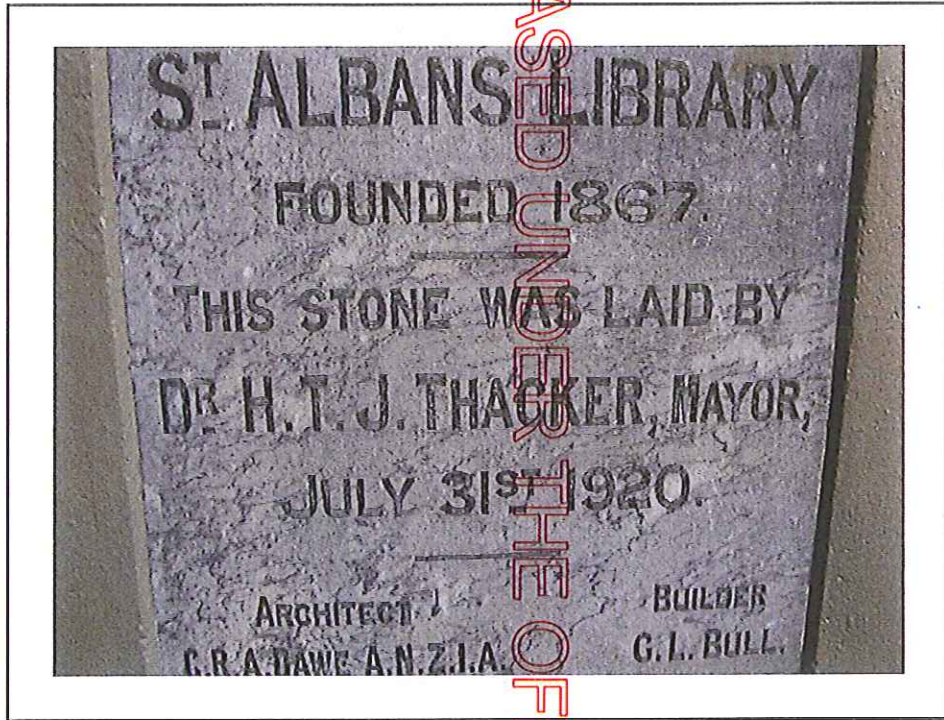
ORIGINAL OWNERS OF THE RURAL SECTIONS

West of Papanui Road:	East of Papanui Road:
R.S. 6 C. W. Wakefield	R.S. 243F Dean and Chapter
R.S. 52 J. Wakefield	R.S. 324 Dean and Chapter
R.S. 105 G. Jackson	R.S. 324A Dean and Chapter
R.S. 133 J. Birch	R.S. 345 Rev. C. Mackie
R.S. 142 D. Mackie	R.S. 217 J. Field
R.S. 299 H.F. Mackie	R.S. 218 J. Field
North of Bealey Road:	R.S. 219 J. Field
R.S. 45 A. C. Barker	R.S. 157e J. and S. Bealey
R.S. 205 J. Cotterill	R.S. 111 C. Pritchard
R.S. 257 A. Linn	R.S. 252 G. Dickson
R.S. 243B Dean and Chapter	R.S. 148 R. Packer
R.S. 363 B. W. Mather	R.S. 136 J. Wyatt
R.S. 268 S. Bealey	R.S. 573 H. B. Greenwood
R.S. 287 J. Bealey	

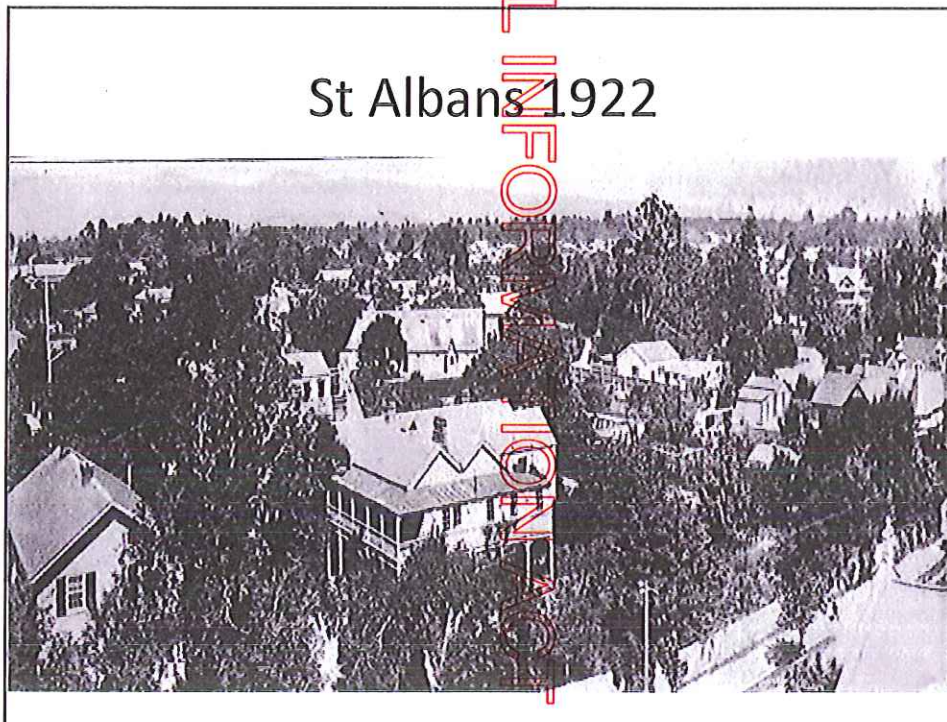
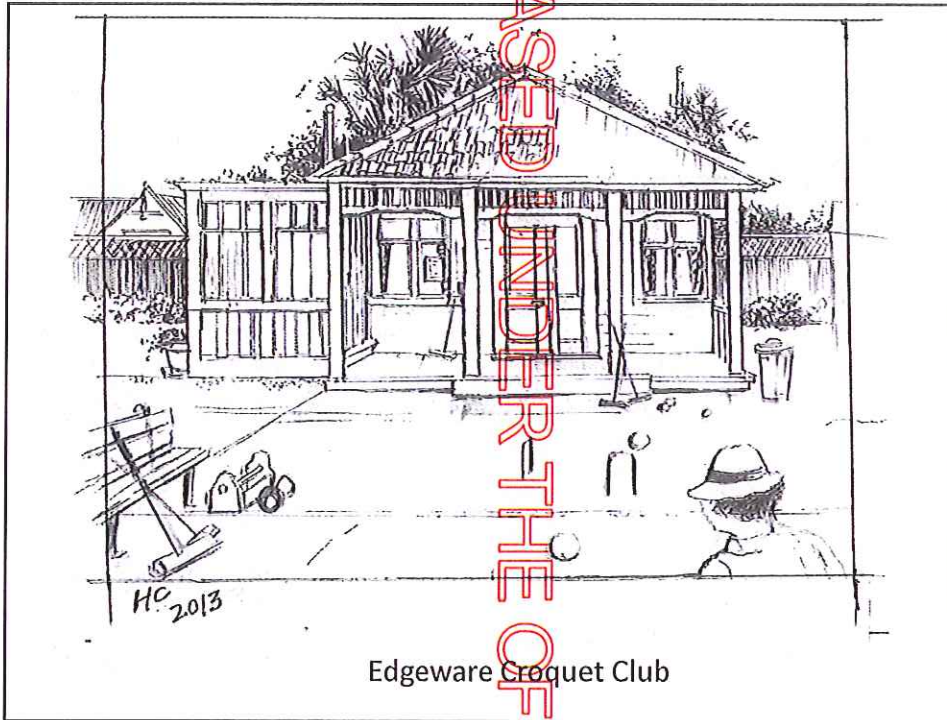


St Albans world famous in NZ in 1862

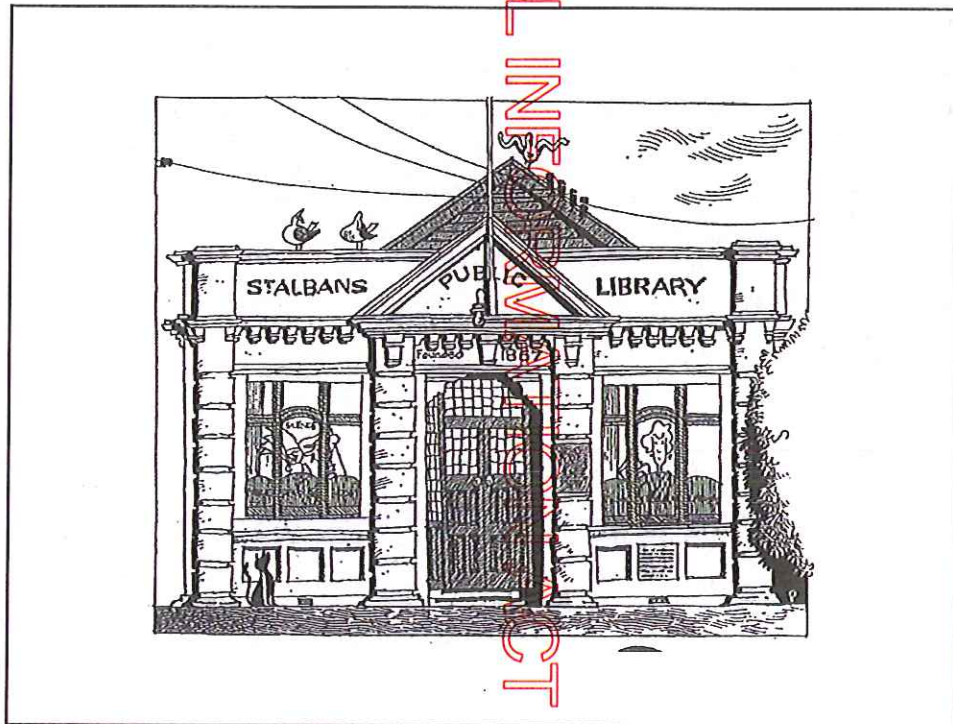
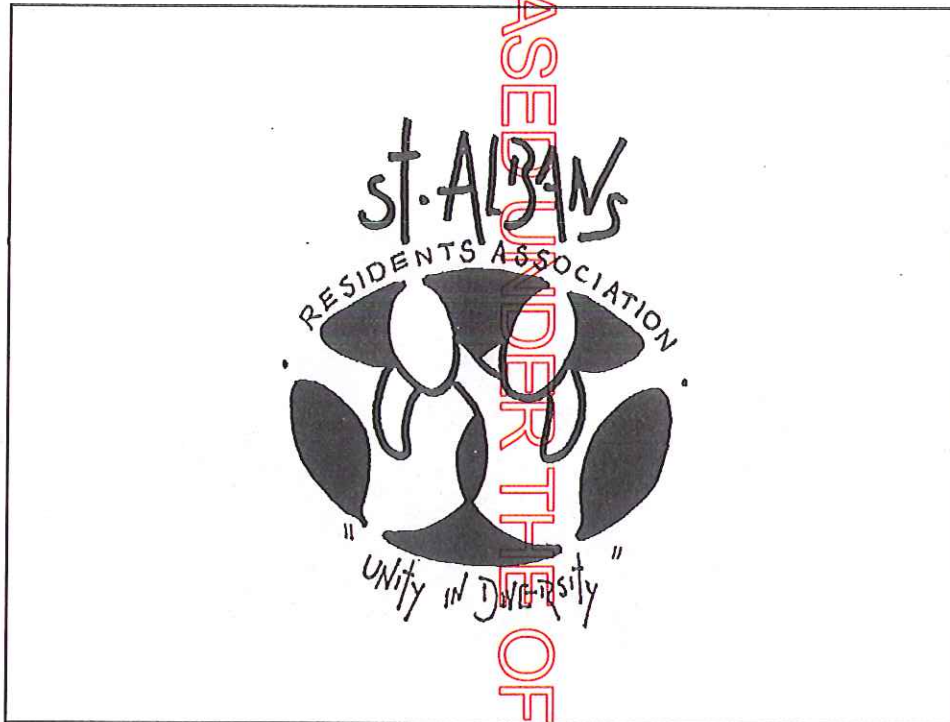
RELEASED UNDER THE OFFICIAL INFORMATION ACT 1982



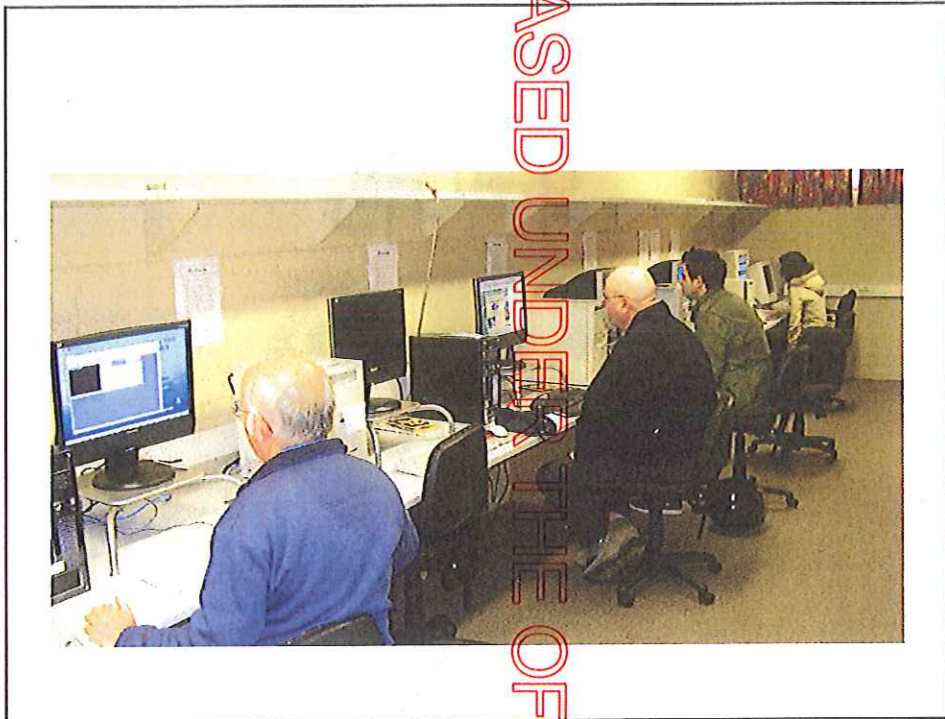
RELEASED UNDER THE OFFICIAL INFORMATION ACT 1982



RELEASED UNDER THE OFFICIAL INFORMATION ACT 1982



RELEASED UNDER THE OFFICIAL INFORMATION ACT 1982



RELEASED UNDER THE OFFICIAL INFORMATION ACT 1982

RELEASED UNDER THE OFFICIAL INFORMATION ACT 1982



St Albans
Community Centre
Te Pokapū Hapori o Halo Ōpani

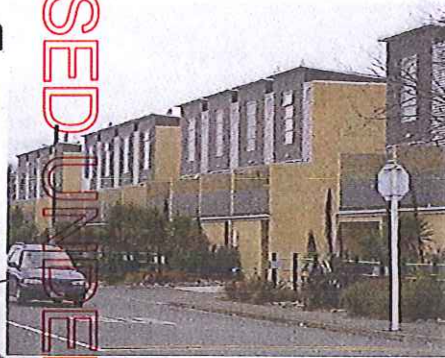
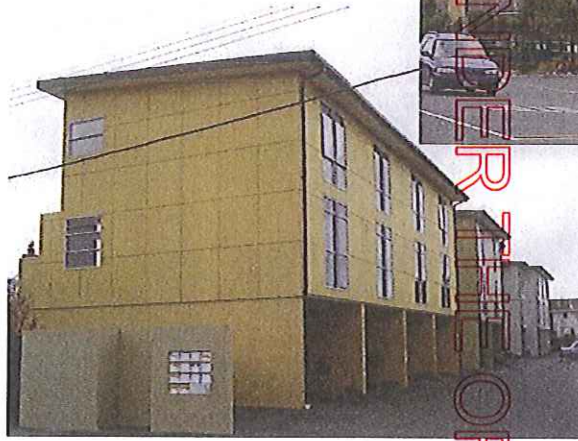
- We have won many civic awards for excellence. To name just a few:
 - Nga Tapuwae o Matou Tupuna (Footsteps of our Ancestors) Award to the St. Albans News for articles written about Heritage education and Awareness
 - Nga Tapuwae o Matou Tupuna (Footsteps of our Ancestors) Award for Good Caretaker of Resources
 - Civic Trust Award. Awarded for the St. Albans community initiative in encouraging a local means of combating climate change

Issues

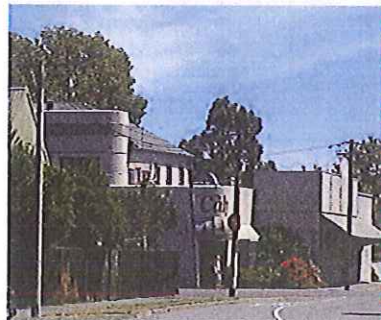
- L3
- Caledonian site / Orion site
- Intersection Colombo/Edgware
- Liquor Stores
- Edgware Pool
- Community Funding by CCC



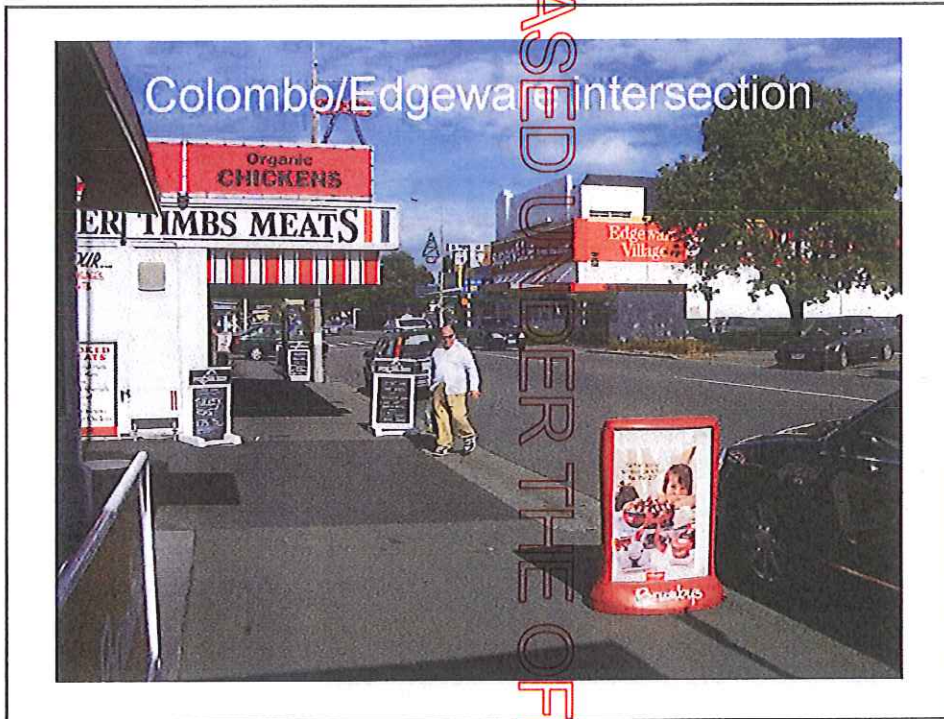
L3 – Densification
and poor building



Caledonian / Orion sites



RELEASED UNDER THE OFFICIAL INFORMATION ACT 1982



RELEASED UNDER THE OFFICIAL INFORMATION ACT 1982

RELEASED UNDER THE OFFICIAL INFORMATION ACT 1982

CITY COUNCIL FUNDING

Residents' group refuses to sign \$40,000 grant 'gagging clause'

Chris Gane

An independent community group has refused to sign what it views as a gagging clause in a new funding agreement with the Christchurch City Council.

The W Alton Residents Association has been granted \$40,000 in annual funding for three years, but is refusing to sign a council agreement that states the funding will be terminated if "the recipient, by any means whatsoever, causes the image or reputation of the council to fall into disrepute".

The council denies the clause is meant to stifle criticism, but the association believes it could gag members.

"The association had received council legal advice regarding it, and the clause was written by Ed Higney, and associated with the former R&B Director."

"There are four and seven clauses in it that it is a gagging clause. They said we could not discuss under those kinds of conditions."

"We said that we would sign the R&B clause, but not the others. The association has been advised of recent council decisions in its recently received New Zealand Herald news article by Donny in September's newsletter and the first article of the new council had been a



terminated if "the recipient, by any means whatsoever, causes the image or reputation of the council to fall into disrepute."

Ed Higney, Christchurch manager of the community centre for the W Alton Residents Association

"independent news organisation of appropriate content and quality" and which "has partial or total loss of memory, advised the name of, John Eddy".

"I don't know what you are saying for referring to Mayor John Fisher by a derogatory reference. I should not have said that."

"Chris Gane, member of the community centre, met by the association, and the group needs it to represent the community and challenge the

status. "We need to be able to be heard by the council, but we are in the position of not being able to be heard against an individual or certain groups and for the job of a resident's association if we have to be the last and second to our council."

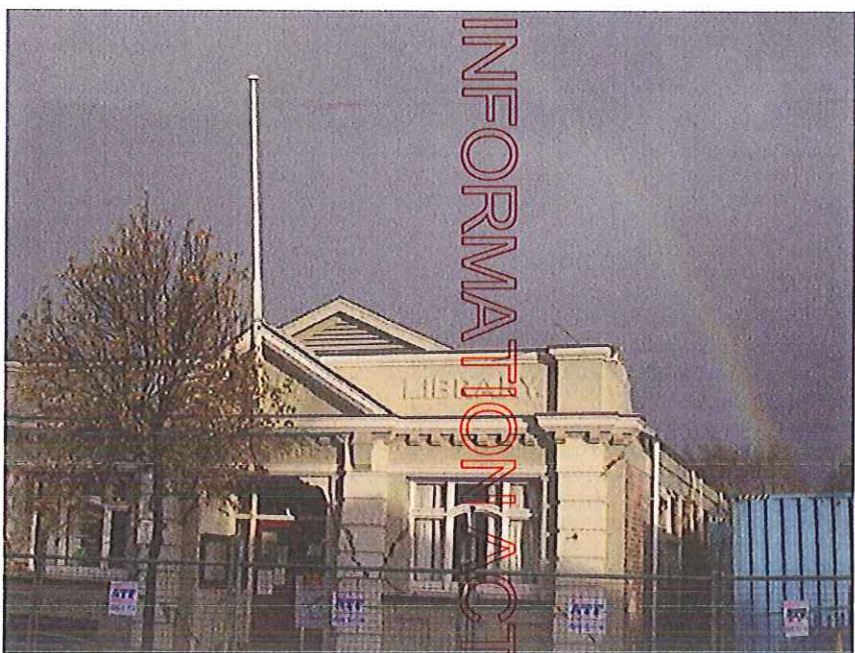
"Council community support manager Catherine McKeown said the clause has not been intended to stifle criticism from community groups."

"She is talking with the group to see if it is possible to have a clause that is designed to protect the council if a community group is not properly run and get out of council funds. Eddy was present."

"We have been told how important it is to have a clause that we can sign and we are prepared to sign the clause."

"It is not a gagging clause."

Community Funding by CCC 'The gagging clause'



RELEASED UNDER THE OFFICIAL INFORMATION ACT 1982

St Albans News (The Voice of our Neighbourhood)

October 2010



Highlights

- Quake Drawing page 4
- Caring Community page 5
- Quake advice page 6-7
- In pictures page 8-9
- NeighbourNet page 11



The earthquake took the clock in the St Albans Centre at 4.36pm on a Wednesday in the playground in the Nightingale Room.

A new beginning

Summary by Bill Davison

Our city and our area suffered a 7.1 earthquake and did so without a single loss of life, the first in history of Canada. Now after several weeks we are still feeling the aftershocks. As an ongoing topic with the size of the damage. Reports are now talking about \$50 billion in damage over the next five years to recover.

What about the damage to ourselves?

What about getting back to normal? How will we view our collective future? In the days from hell every one felt that. These are the questions that are most difficult to answer. We can always fix a broken building but can we fix loss as well as rebuild ourselves, our neighbours and our community?

Random acts of kindness

Anna Plourde's father's dog comes to mind as it did on the last few weeks. The dog on a less than good day had a room a couple could use if they had no place to stay. That of the people taking time to take English cars to the vet. Consider the many people who opened their doors and homes to their neighbours and their food. These were not a great thing to do from the mind they came from the heart. These were simple, random acts of kindness.

Where to find help

For the last few days of the earthquake we hope that going forward there will be much more to be done by people and your ideas as to what to do about both the and how to rebuild with care and compassion.

For our communities and neighborhoods as a whole a wonderful opportunity to get to know each other better and one for each other and start to help each other every day of September.

For our whole city, building stronger and more, and positive that in the future you will continue to build a new St Albans.

The St Albans News is read by 24,000 people, 19 dogs, 3 cats and a parrot



RELEASED

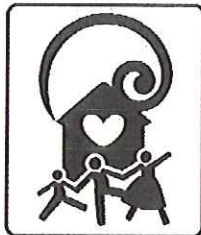


OFFICIAL

INFORMATION ACT

1982

October 2011

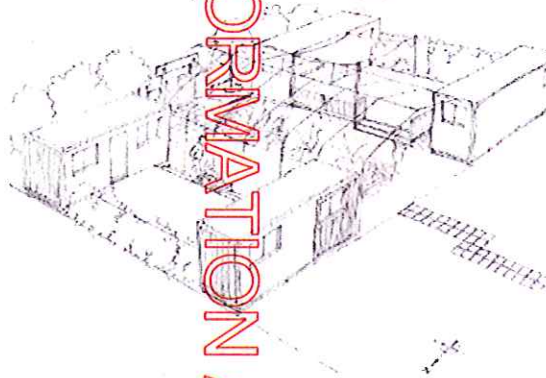


Highlights

Confessions of a
footy addict
page 3

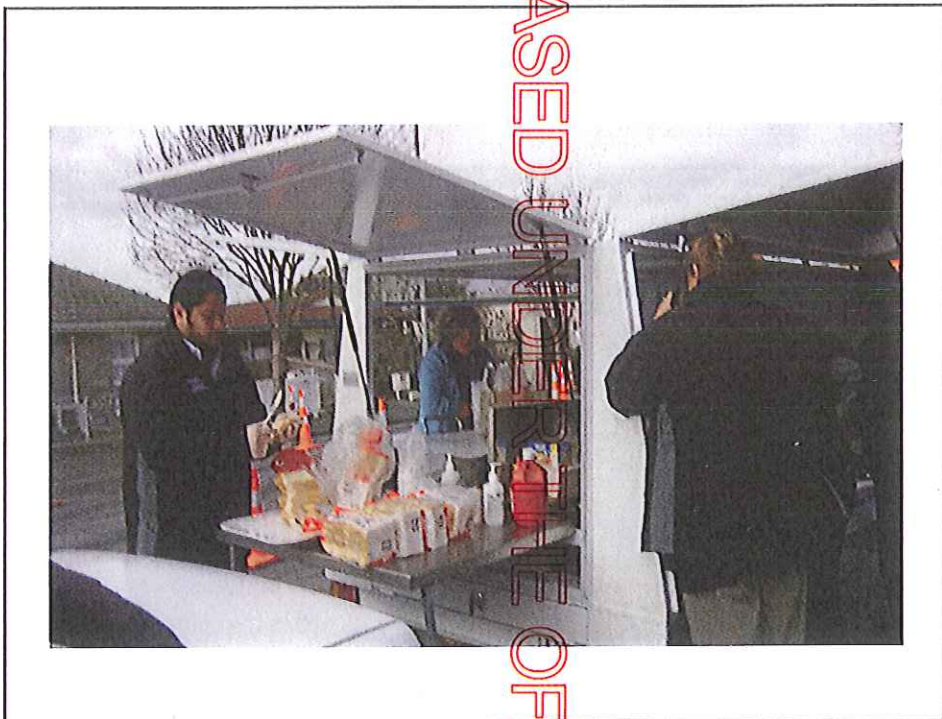
History of 130
Caledonian Rd
page 5


Can We Build It? Yes, We Can!



by Max Feute

Here is an exciting concept to quickstart community recovery in St Albans. Brainchild of the fertile imagination of local resident Simon Geary, it is envisaged that a temporary community facility can be erected






St Albans Community Strategy 2013-2023

A 20-point plan to realise the greater St Albans vision for the next decade

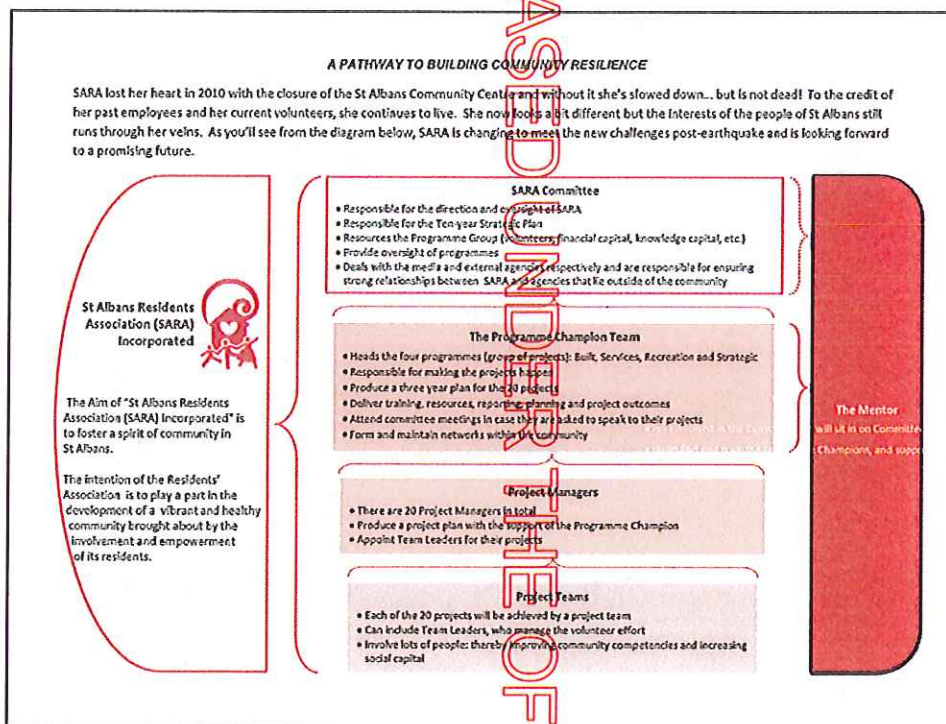
BUILT	<ul style="list-style-type: none"> Public swimming pool - a swimming pool, fitness centre, hydrotherapy and leisure facilities Community facilities for citizens - places for people to meet, socialise and learn together Safer roads and footpaths - making shared spaces with cars safer and easier Edgeware Village localisation - upgrading Edgeware Village Improve Watlington shopping area - upgrade the Watlington shopping precinct
SERVICES	<ul style="list-style-type: none"> Community information - enhance the way community information is obtained Community facility brokerage - assist groups of citizens to meet and run events Enhance Library Services - provide comprehensive services through libraries Community Patrol - a safety patrol staffed by local residents Civil Defence/Resilience - improve the resilience of the local community
RECREATION	<ul style="list-style-type: none"> Alban/West River Park - a recreation area linking the river to other suburbs Community food production programme - encourage local food growth and consumption Youth arts, recreation and cultural events - youth-driven events and activities Community arts and culture initiative - encourage citizens to participate in arts and culture Makeham Park Fitness trail - a circular trail designed to challenge all ages
STRATEGIC	<ul style="list-style-type: none"> Train link to central city - lobby to get the train route back into St Albans Enhance community spirit - activities to uplift citizens and encourage civic pride Develop sense of place - development strategy discussion around 'What is St Albans?' Sustainable living - strategies led locally through a more sustainable community Enter quality housing - improving housing for everyone to warm, safe and secure



Resilience More Freedom

RELEASED UNDER THE OFFICIAL INFORMATION ACT 1982

RELEASED UNDER THE OFFICIAL INFORMATION ACT 1982



THE STARTING PLACE

It's no wonder there's confusion with all these acronyms! EQC, EQR, TC3, SCIRT, CERA, CCR and so on. You just about need a degree to get your head around the whole thing. But there's only one acronym that's concerned solely with the interests of St Albans residents and that's SARA – The St Albans Residents' Association.

Together we can work together to make the best of a bad situation and improve all of our current lifestyles but to do so we need to really focus on what's important. So we're going to put all the acronyms on the back-burner for now and start working to create twenty wonderful projects for the whole community to get involved in. Not only will we be working toward a brighter future for the area, we'll be working side-by-side, meeting more of the community, interacting with local groups and probably surprising ourselves by how amazing we all are. So for those of you who have a degree – or just like the details up front – here's how we mean to achieve this:

	Definition	Methods to Achieve	Outcomes
Characteristics of Resilience	Social Capital: Shared norms or values that promote social cooperation, realised in actual social relationships	Build networks in the community Develop methods to exchange favours Promote the importance of helping others Build connections between local groups	People save money through sharing resources, skills and time. Levels of trust are improved amongst residents. Reduction in crime. Improved health outcomes for vulnerable people.
	Community Competence: Risk awareness and the ability to problem-solve cohesively and innovatively	Train people for specific skills or tasks Public/adult education programmes Events and activities Community-run projects	Residents gain useful skills. Increased community activity. Boost to local services. Increased innovation.
	Information Flow: The development of credible and useful means of communicating that operate in the face of unknowns	Build networks in the community Develop methods to improve information flow Create distributive networks Develop credibility amongst residents	Less confusion and uncertainty when adversity strikes. Greater levels of confidence in the community.
	Equity: When the ratio of a person's inputs to their outcomes is equivalent to those around them	Understand the state of the community's equity Identify those most at risk Develop methodologies to foster equity Boost local (community) economy	Less drain on community resources. More people available to contribute to the community. Improvement in economic, social, educational and health outcomes.

Residents plan to make St Albans inclusive

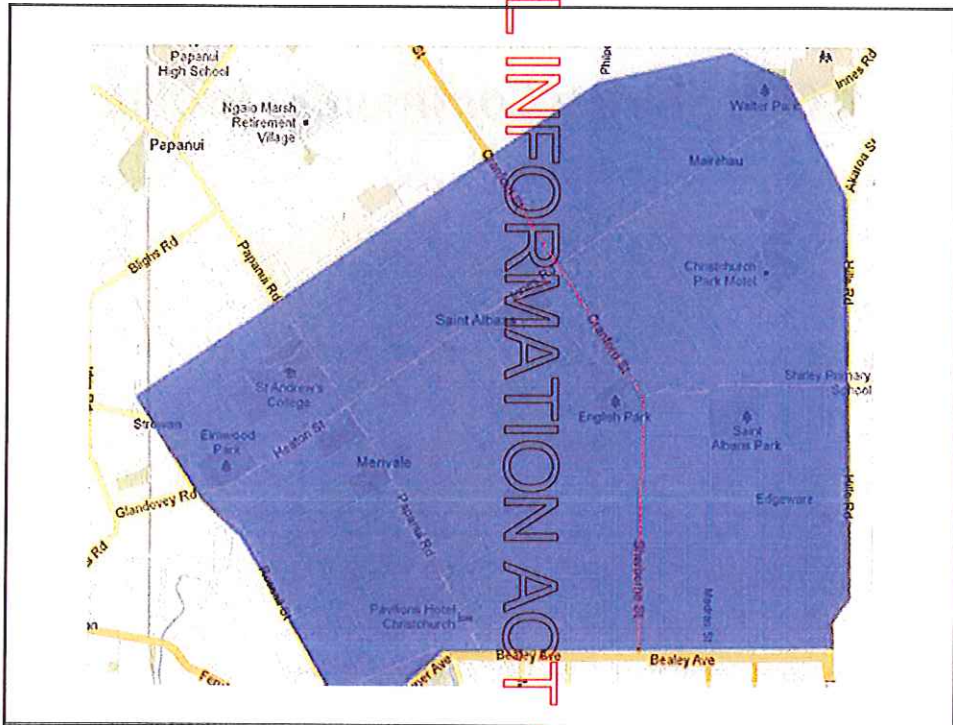


Inclusive: St Albans resident Sari Harrison, left, holding William Harrison, with dog Bodhi Harrison, St Albans Residents Association chairperson Emma Twaddell and leader of the Inclusive Community Project leader Hine Moke. Photo: Jessica Schaap

A PROJECT to make St Albans more inclusive It also seeks accessible walkways and an bookings for people to use it. All sorts of people

CURRENT ISSUES

- TC3
- Cranford St Motorway Extension and the 4 laning of Cranford and Innes Rd
- Losing our identity
- Roading and Footpaths
- Increasing heavy traffic
- Lack of council support

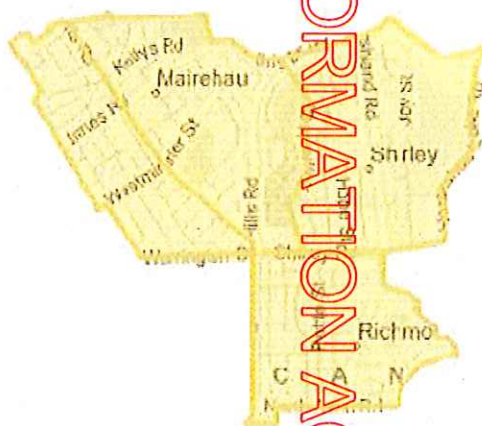


RELEASED UNDER THE OFFICIAL INFORMATION ACT 1982

CCC's 2012 St Albans Community Profile



CCC's Shirley Community Profile



RELEASED UNDER THE OFFICIAL INFORMATION ACT 1982

- Without good working relationships any democratically elected organisation will have difficulty succeeding.
- No council will be effective unless mutual respect exists between the public, elected leaders and management staff. This Code seeks to facilitate more effective working relationships. Resolution of alleged breaches of the Code is to be made in the interests of the good governance of the Council, not for the personal interests of Councillors.

From CCC Code of Conduct

CERA Recovery Strategy (2012) has the following goal for social recovery.

“To strengthen community resilience, safety and wellbeing and enhance quality of life for residents and visitors by:

- enabling and empowering local communities to shape and lead their own recovery;
- growing capacity, knowledge and skills within the community to build resilience;

- The International Federation of Red Cross and Red Crescent Societies (as cited in New Zealand Red Cross Recovery Framework, 2012, p.21),
- described psychosocial recovery as A process of facilitating resilience within individuals, families and communities [enabling families to bounce back from the impact of crisis and helping them to deal with such events in the future]. By respecting the independence, dignity and coping mechanisms of individuals and communities, psychosocial support promotes the restoration of social cohesion and infrastructure.

CERA PLEASE HELP THE PEOPLE OF
CHRISTCHURCH BY EMPOWERING
OUR COMMUNITIES

We have lost much of our built history
lets not lose our social history too



RELEASED UNDER THE OFFICIAL INFORMATION ACT 1982