

Artist's impression: Triangle Centre – internal view.  
Image supplied courtesy of Tim Glasson.

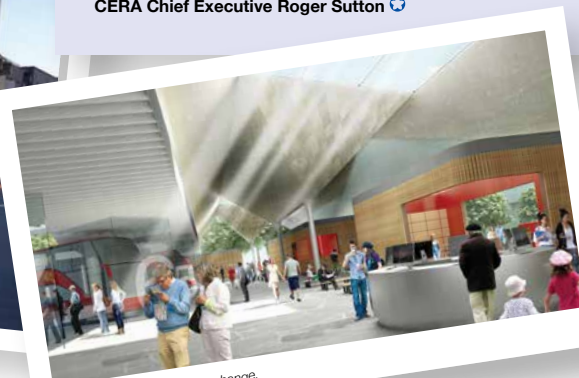


## The changing face of our Christchurch central city

This is our city today - positively progressing with commercial rebuilds, big and small, underway and complete throughout the rebuild zone. There's also been huge progress in the past few weeks with major central city anchor projects. Inside this Update you will read about the next steps for the Retail Precinct, Innovation Precinct, Performing Arts Precinct, Bus Interchange and Justice and Emergency Services Precinct.

But this phase of our progress isn't just about the steel and concrete. So much is happening around the social recovery of the residents of greater Christchurch. This includes the development of strategies around sporting recovery, extended funding for earthquake support services and new initiatives for youth wellbeing. I hope you can take the time to find out more inside.

**CERA Chief Executive Roger Sutton** 



Artist's impression: Bus Interchange.





Hon Gerry Brownlee  
Minister for Canterbury Earthquake Recovery

There has been recent data signalling the greater Christchurch recovery, especially in the construction sector, is on a roll. This is great news, but it is my belief the recovery has never lost momentum – despite its many complex challenges. It is just that sometimes it is hard to tell a story that, while it is happening on the ground, is also taking place in planning offices and on the drawing pads of very clever professionals who are experts in design, engineering, architecture and urban design. It has been said before but it takes time to come up with excellence. That is what we want for this city and that is what is coming through – from the private and public sectors.

As you can see from the front page of this Update, the rebuild is strong in the Christchurch central city with many commercial builds underway or complete. Two major anchor projects, the Bus Interchange and Justice and Emergency Services Precinct, are now in the hands of the successful contractors who will see them constructed and become vibrant and vital hubs. Other anchor projects such as Retail Precinct, Performing Arts Precinct and Innovation Precinct have made great steps forward with construction projects underway or significant tenants lined up.

In addition to this, the undertaking to see the return of government staff to the central city is being realised with the confirmation that 1,100 staff from 13 departments will be housed in three new privately-owned commercial buildings. On top of this 200 Inland Revenue staff already working in the city, and will soon be followed by another 400 government staff moving into another new building in the city.

We can also take heart from data from Canterbury Development Corporation which shows Canterbury's is the fastest-growing economy in the country and has one of the lowest unemployment rates (at just above three per cent). You can read more about that further into this Update.

The recent re-opening of the Summit Road between the Rapaki Track and the Bridle Path Track to recreational users is also a great boost for cyclists, runners and walkers. The Government recently pledged \$2 million towards a new \$22.5 million downhill mountain bike park in the Port Hills, so there will be even more opportunities for people to enjoy what the area has to offer.

I am thrilled to see the Hagley Cricket Oval will host the Boxing Day cricket test this year. I have also committed \$4 million for work to begin on the feasibility and scope of the proposed new Christchurch Stadium.

All of these developments are positive for the rebuilding of not just our physical spaces but also our health and wellbeing. A huge amount of work is being done in the psychosocial, social and sporting arenas to improve the wellbeing of greater Christchurch residents, young and old, and those efforts will see us get through these tough times and come out stronger as a community. 🇳🇿



Artist's impression: Bus Interchange. This impressive building will define Colombo Street and create a landmark that encourages people to meet.

## Bus Interchange moves a step closer

The anchor project at the hub of central Christchurch's transport plan is now in the hands of the contractors who will make it a reality. The Bus Interchange begins construction this month and is scheduled to be completed by the middle of next year.

In a joint venture, Christchurch's Southbase and Australian company Thiess will build the \$53 million facility on a 14,000-square-metre block bounded by Sol Square and Tuam, Colombo and Lichfield streets. The companies took over the site late last month.

Minister for Canterbury Earthquake Recovery Gerry Brownlee says key features of the Bus Interchange include airport-style lounges that will keep passengers completely separate from the bus circulation area, retail outlets, a café and dedicated waiting zones.

"It has been developed with a variety of transport modes in mind, with secure bicycle storage facilities, easy access to taxi ranks on Colombo Street and regional bus bays immediately outside on Lichfield Street.

"Its location means almost any point in the new CBD will be no more than a five-minute walk away," says Minister Brownlee.

### Key dates:

- Design Request for Proposal – October 2013
- Design – first two quarters of 2014
- Construction – from July 2014
- Fully operational – mid 2015

### The Bus Interchange will:

- encourage use of public transport
- incorporate cycle storage facilities
- reduce bus movements in the Core of the city
- cater for growth for 30 years and beyond.

The Bus Interchange is an important component of An Accessible City, the transport chapter of the Christchurch Central Recovery Plan. For background on An Accessible City, go to: <http://ccdu.govt.nz/the-plan/an-accessible-city>

You can find out more on the timeframes around central city anchor projects (and other public sector projects) at: [cera.govt.nz/public-sector-rebuild](http://cera.govt.nz/public-sector-rebuild)



## Justice and Emergency Services Precinct contractor appointed

Fletcher Construction Company Limited has been awarded the main contract to construct the new Christchurch Justice and Emergency Services Precinct.

The \$300 million anchor project, led by the Ministry of Justice, marks a bringing together of all justice and emergency services agencies in one location. The 40,000-square-metre precinct will house the Ministry of Justice, New Zealand Police, the Department of Corrections, St John, the New Zealand Fire Service and Civil Defence and Emergency Management agencies for Christchurch and Canterbury.

Construction of the precinct will begin immediately and will be supported by local subcontractors and national and international partners where needed.

The precinct buildings will be delivered by the end of December 2016, five months ahead of schedule. Once

completed, the precinct will see the return of an estimated 2,000 people daily going about their business in the inner city.

Downer, the early works contractor, is nearing completion of the precinct's ground improvements work. Part of this work has included the stabilisation of more than 25,000 cubic metres of soil (equivalent to 10 Olympic-size swimming pools) with 3,500 cubic metres of cement, which is then placed back in the ground. This will support a heavy-duty 1.2-metre-thick concrete raft, the base for two of the precinct's three buildings.

For more information about the precinct and its other contract appointments, go to: [www.justice.govt.nz/justice-sector/christchurch-precinct](http://www.justice.govt.nz/justice-sector/christchurch-precinct)

Or go to: <http://ccdu.govt.nz/projects-and-precincts/justice-and-emergency-services-precinct> to see the time-lapse camera feed of progress at the precinct. 🇳🇿

# Random act of kindness for quake-weary Linwood couple

It is a mystery to Len and Alison Smith as to who referred them to the Let's Find & Fix programme but they are grateful for the help.

The Linwood couple's TC3 home will ultimately be demolished and they hope to start rebuilding when the weather warms up. In the meantime, the brick exterior cladding has been heavily reinforced by plywood and wooden supports – temporary fixes that went up after the earthquakes over three years ago. The house has also been draughty due to the many gaps in the exterior structure and window frames. Or that was until two Fletcher Construction workers turned up on the Smiths' doorstep recently and explained they were there to weatherproof the house.

The team is part of the community-led Let's Find & Fix campaign supported by multiple agencies, including the Christchurch Earthquake Appeal Trust, CERA, insurers and Earthquake Commission. It offers repairs to earthquake-damaged properties in greater Christchurch that need to be made secure or weather-tight. The service is free for those who qualify, even if they have ongoing claims.

Retiree Len Smith says the two Fletcher employees worked on the property for a day and a half, reinforcing the brickwork and sealing up the gaps.

"They puttied up all the cracks in the bricks. The brick window sills were moving away from the frames so they bogged them up too."



Len Smith examines the temporary repairs to his badly cracked windows.

Len Smith says rain water was coming in through the lounge window and seeping in between the layers of the wall. There was also a leak at the back of the house near the access to Alison Smith's wheelchair lift.

Although he still doesn't know who referred them, Len Smith is embracing the random act of kindness which has seen all that fixed.

"There was no cost us at all so we are pretty glad about that and our house is now warmer and drier than it was before." 🌱

**If you or someone you know is living in a house that was damaged during the earthquakes and has issues with weathertightness, security or sewerage, you may qualify for a temporary fix.**

To find out more, phone **0800 233 551**



## A year on: Residential Advisory Service provides guidance to thousands

Since it began a year ago, the Residential Advisory Service has been providing free, independent help to residential property owners who are facing challenges in getting their home repaired or rebuilt following the Canterbury earthquakes.

In that time, it has received more than 5,000 calls and emails from people seeking help. Independent advisors, who are all qualified solicitors, have held more than 1,000 meetings with property owners to help them make headway with the earthquake repair/rebuild process.

Associate Canterbury Earthquake Recovery Minister Nicky Wagner says the numbers clearly indicate the service is needed. Moreover, the experience from the first year will be invaluable in ensuring it can continue delivering outcomes for home owners with complex issues.

Survey results show the Residential Advisory Service is extremely effective. Of those who have used the service, 84 per cent have been satisfied or very satisfied with it while 96 per cent felt they were listened to and understood.



Having gradually expanded since it started, the Residential Advisory Service is now available to property owners who have complaints related to Earthquake Commission settlements.

For more information about this service and whether it is right for you, go to: [www.advisory.org.nz](http://www.advisory.org.nz) or phone **0800 777 299**. 🌱

### Where to go for earthquake support and assistance

**Earthquake Support Coordination Service:**  
0800 777 846

**Canterbury Support Line:** 0800 777 846

**Residential Advisory Service:**  
[www.advisory.org.nz](http://www.advisory.org.nz) or call 0800 777 299

**Canterbury Earthquake Temporary Accommodation Service (CETAS):**  
[www.quakeaccommodation.govt.nz/apply-for-temporary-accommodation-assistance](http://www.quakeaccommodation.govt.nz/apply-for-temporary-accommodation-assistance) or call 0800 673 227



**Roger Sutton**  
CERA Chief Executive

Community wellbeing is a huge focus of the work we do at CERA. We know that the impact of the many earthquakes experienced throughout our region in the last few years has been massive. So much of our planning, service delivery and networking across agencies and communities ensures the recovery process continues to prioritise the health and wellbeing of individuals, families, neighbourhoods and communities.

This Update provides you with what I consider to be some very important messages about wellbeing, particularly the research we do to gauge the progress of our recovery, strategies that identify what else we need to do (such as the recently launched 'Community in Mind' psychosocial strategy and the Programme of Action that will follow) and the many agencies and programmes already providing valuable services at this time.

We know that recovery takes time and people need help with keeping well during this long process. We also know that there are particular groups that have not recovered as well as others, who have been very affected by the many changes that have occurred. For some people, the zoning process has taken too long, the repair and rebuilding process has been fractured and frustrating, and the loss of certainty has sometimes been overwhelming.

Alongside our partner agencies, we have worked to ensure there is strong support in place to help. For instance, Earthquake Support Coordinators funded by the Ministry of Social Development are available to help with individual support and with finding the services needed, including free counselling. The Residential Advisory Service can help progress insurance and EQC issues; and the Let's Find & Fix campaign, a great new community initiative, provides temporary repairs now to make homes snug over winter. And there are other great initiatives to boost our wellbeing such as the 'All Right?' campaign and the Winter Chill events. There are many more and I would encourage you to have a look at the CERA website (<http://cera.govt.nz/support-and-assistance>) to see the work being done to boost community resilience and to read the tips that can help at this time. Please also make sure you tell others about this support because some of these services are new. We want to make sure this information is widely distributed.

One of my most enduring memories of the early part of this recovery process is the way we all came together to help each other. This support got us through those initial shocking times and it remains an essential part of the ongoing health and wellbeing of our communities. We also have to continue to look after ourselves, to take a moment on a regular basis, to read a book, do regular exercise if we can and keep in touch with friends. I encourage you all to do this.

Kia kaha. 🌱



## Music to the ears – Performing Arts Precinct takes shape

The development of the precinct at the heart of Christchurch's cultural recovery has taken a significant step forward.

Construction of a \$12.5 million Music Centre of Christchurch at the Performing Arts Precinct has been confirmed. Work is scheduled to get underway before the end of the year.

The Performing Arts Precinct will sit on the block of land between New Regent and Colombo streets, currently anchored by the restored Isaac Theatre Royal.

The precinct project is being jointly led by the Crown and Christchurch City Council.

Christchurch Mayor Lianne Dalziel says she believes the performing arts announcement is extremely important for the city's recovery.

"We lost much of the cultural fabric of our city in the earthquakes and this announcement sees that not only restored, but also reinvigorated with the different venues coming together in the one place."

Minister for Canterbury Earthquake Recovery Gerry Brownlee says negotiations are continuing with the Court Theatre and the Christchurch Symphony Orchestra. It is hoped both will soon be confirmed as joining the Music Centre of Christchurch in the precinct.

For more information, visit: [www.ccd.govt.nz/projects-and-precincts/performing-arts-precinct](http://www.ccd.govt.nz/projects-and-precincts/performing-arts-precinct)

*(Right) Isaac Theatre Royal (ITR): Giant ballerina mural adorns the rear wall of the theatre. The mural by artist Owen Dippie was commissioned by ITR as part of the RISE Festival.*

*Isaac Theatre Royal is scheduled to re-open in November. The 2014 Re-opening Season will include performances from Royal New Zealand Ballet, the Christchurch Symphony Orchestra, Kostroma Russian Dance Company and Southern Ballet.*



## New Gap Filler projects take shape in the central city

On the former Durham Street site of the Crown Plaza, there's a gap to fill again now that the Pallet Pavilion has been deconstructed. With most of the pavilion's materials returned to their former uses or sent on to new ones, Gap Filler is further developing the site, called The Commons.

Gap Filler Director and Co-founder Coralie Winn says the site will soon feature a landscaped grassed area, seating and a demonstration rain-garden. She says a Food Collective is taking shape that is sure to gain momentum as the weather improves.

Lonnie Hutchinson's artwork, I Like Your Form, created for the Festival of Transitional Architecture will be installed for six weeks in the Arcades project by mid-July. Coralie Winn says further such projects are planned for spring and summer this year.



*The Commons concept design, Outlandish Landscapes, 2014.*

"Gap Filler hopes The Commons will be home to a range of projects, organisations and events as well as providing ample volunteer opportunities. We are keen to hear from people and organisations who would like to propose something for the site."

Gap Golf, Christchurch's mini-golf course that stretches across the central city, will welcome a new hole on High Street this winter. Other Gap Filler projects – such as RAD Bikes, the Dance-O-Mat and Sound Garden – are out there

for discovery in various vacant sites in the city, says Coralie Winn.

Gap Filler has also been busy in the education space of late as more schools take an interest in exploring the transitional city. Linwood College, Waitakiri, Westburn and Beckenham schools have taken Gap Filler field trips in recent months.

Find out more about Gap Filler projects at [www.gapfiller.org.nz](http://www.gapfiller.org.nz) or download the Gap Map App.

# Vodafone tenancy dials in huge step forward for central city

The announcement of Vodafone as anchor tenant of the Christchurch Innovation Precinct is being hailed as a key step in the central city's recovery.

The Telco will set up its main South Island headquarters in the precinct, as well as one of its international Xone incubators.

Vodafone's building will deliver more than 8,300 square metres of open-plan floor space and will include retail premises and a café on the ground floor. The company expects to move into the building in early 2016.

The Christchurch Xone incubator will be only the sixth of its type that Vodafone has set up across the world. Each Xone incubator offers advice, support and assistance to technology start-ups focused on mobile platforms, consumer electronics, smart charging and automotive technologies.

The Vodafone announcement last month came as Minister for Canterbury Earthquake Recovery Gerry Brownlee and Science and Innovation Minister Steven Joyce released the spatial framework for the Innovation Precinct.

Minister Brownlee says securing Vodafone was testament to the groundwork that the Ministry of Business, Innovation and Employment and CERA's Christchurch Central Development Unit have put in.

"We know that people want to live, work and play in the city, and when key organisations like Vodafone have the vision to take that challenge, it's clearly a significant step forward in Christchurch's recovery."

The Christchurch Innovation Precinct covers an area of approximately 3.6 hectares in the south-east corner of the urban Frame. It will be located within three city blocks bounded by Lichfield, Manchester, St Asaph, High, Tuam and Madras streets.

The precinct's spatial framework and strategy report are available at: [www.mbie.govt.nz/what-we-do/canterbury-recovery/chip](http://www.mbie.govt.nz/what-we-do/canterbury-recovery/chip)



Artist's impression: Vodafone's planned new Christchurch building.

*Everything*  
**Coming up**  
**IN OUR CITY**  
is just a click away.

[futurechristchurch.co.nz](http://futurechristchurch.co.nz)



**FUTURE CHRISTCHURCH**  
GREATER CANTERBURY

**CERA**  
Canterbury Earthquake Recovery Authority  
Te Mana Houmanu o Waihaha

**Christchurch City Council**

## Central city vision on display at Re:START

Residents can use the latest interactive technology to view rebuild projects and plans for central Christchurch at the newly launched Future Christchurch Showcase in Re:START Mall.

The showcase is one of the latest additions to the Cashel Street container mall which has just been revamped to make space for Retail Precinct development.

People can view plans and projects in 3D, engage with interactive multimedia displays, or have their say on the city's future. The attraction is accommodated in two freight containers and a connecting atrium. Open 10am to 5pm daily, it has Future Christchurch ambassadors on hand to guide visitors in using its various features.



The Future Christchurch Showcase, offering technological insights into our changing central city.

## A new start for Re:START

Twenty Re:START retailers from the northern side of the mall have moved to make way for the \$100 million retail development by Nick Hunt.

The new mall area was officially opened by Minister for Earthquake Recovery Gerry Brownlee and the Re:START the Heart Trust last month. It is on a combination of Crown-owned and private land in the area of the Retail Precinct bounded by Oxford Terrace, Cashel Street, Plymouth Lane and Lichfield Street.

"The mall has been a fantastic drawcard for bringing people back into the central city after the closures brought on by the earthquakes," Minister Brownlee says.

"It's proven so popular that we wanted to see it continue even as new permanent development ramps up in the new Retail Precinct. That's why the Government has put up \$1.27 million for the relocation, and provided land to accommodate the containers moving from the northern side of the former mall set-up."

Retailers will be able to stay on the new mall site for up to two years.



# A closer look at what EQC is doing to settle Canterbury land claims.

## SETTLEMENT OF COMPLEX CLAIMS

EQC has now completed 65 per cent of land settlements for the Canterbury series of earthquakes.

EQC is currently working through a number of land claims where, for a variety of reasons, settlement is not straightforward. These complex claims take longer to settle.

This is certainly the case for its most complex land claims, Increased Liquefaction Vulnerability (ILV) and Increased Flooding Vulnerability (IFV), which are new forms of land damage that have not previously been settled by EQC.

As the damage is not immediately visible, it is an extensive process to first identify which properties are affected and then to identify what settlement options might be available.

In May 2014, EQC and the Insurance Council of New Zealand lodged proceedings in the High Court for a declaratory judgment on several legal questions related to the settlement of IFV claims. A declaratory judgment is the best way of achieving legal certainty for all parties involved.

EQC invited the Insurance Council of New Zealand to participate in the proceedings and the two organisations have asked the court to also consider legal questions related to the settlement of ILV. Christchurch City Council and Southern Response have also joined as parties to the proceedings.

A judgment from the proceedings is not expected until late 2014 or early 2015. This, along with geotechnical work, may result in settlement of some or all ILV and IFV claims stretching into 2015.

## INCREASED LIQUEFACTION VULNERABILITY

In some areas of Canterbury, the ground surface has subsided due to the earthquakes yet the groundwater table has typically remained at a constant level. Therefore the ground surface is closer to the groundwater table than it was prior to the earthquakes. This generally reduces the thickness of the non-liquefying ground crust. As a result, there has been an increase in the future vulnerability to the liquefaction hazard of some sites.

In order to identify these properties EQC has completed extensive research:



EQC's engineers are presently analysing this data to confirm which properties qualify as having this type of land damage. Once confirmed, EQC will send home owners a letter explaining the next steps.

As this form of damage has not been experienced before, EQC is also working with other agencies and insurers to pilot a number of land repair methods to address the vulnerability the property has to liquefaction.

## INCREASED FLOODING VULNERABILITY

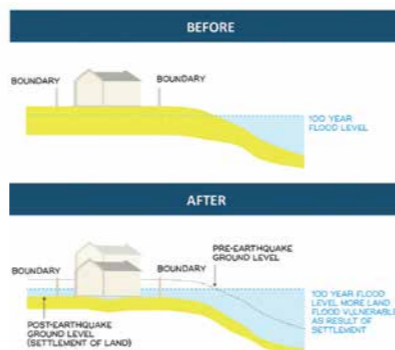
In some parts of greater Christchurch, the earthquakes caused changes to residential land that mean some properties are now susceptible to flooding, where previously they were not, and some are now more likely to experience a greater depth and/or frequency of flooding.

EQC has recently contacted home owners with properties that are potentially affected by this form of land damage and explained the in-depth flood modelling and research it has undertaken to identify these properties. The work to confirm which properties are affected is now underway, with engineers out on the ground validating the flood modelling results.

Not all properties that are experiencing frequent or severe flooding since the earthquakes will qualify for IFV settlements.

Christchurch is a relatively flat, low-lying city and there have always been areas prone to flooding. In some places the earthquakes have increased flood potential for the time being through changes to river heights, narrowing of river banks, shallower river beds and damage to public stormwater infrastructure. EQC does not cover these causes of flooding.

Only changes to insured land that have resulted in the insured land becoming more vulnerable to flooding as a direct result of the earthquakes are covered by EQC.



The above diagram shows how ground subsidence from the Canterbury earthquakes has made some properties more vulnerable to flooding.



EQC land assessor on-site.

## GROUND IMPROVEMENT PILOTS

In 2013, EQC, with support from a range of government agencies as well as New Zealand and US scientists and engineers, facilitated a 'ground improvement trial' in the residential red zone. This was to identify methods for strengthening residential land to make it more resilient to liquefaction in future earthquakes.

Having identified a number of methods, EQC is now working with private insurers and home owners on a pilot programme to implement these in real-life situations with the aim of understanding if they are practical, cost-effective and consentable.

EQC is responsible for managing the ground improvement and, while this work is underway, insurers are working with their customers to design and plan the rebuild of their homes. It is important to understand that these pilots are to assist in costing land remediation methods. While EQC is managing the ground improvement work in these pilots, its preference is to settle a land claim by providing a cash payment.

Each of the ground improvement methods being used in the pilot programme is designed to stiffen or thicken the crust above groundwater levels to prevent liquefaction from occurring.

There are around 30 pilot sites throughout greater Christchurch where EQC is testing methods on cleared properties. It expects to complete construction on these cleared sites this month, with post-construction testing following soon after in order to confirm that the methods have achieved their intended outcomes.

There is also a separate pilot programme now underway to test a repair method for properties where the dwelling is repairable and still on site. This pilot will be completed in the next few months.

New Zealand Government

## AN EXAMPLE OF GROUND IMPROVEMENT IN KAIAPOI

EQC has just completed ground improvement on a site in Kaiapoi. The ground improvement method being used in Kaiapoi is called gravel raft.

Key elements of gravel raft, as designed for the Kaiapoi site, are:

- excavating the site to a depth of just over 2 metres
- dewatering (pumping groundwater away)
- lining the excavation with geotextile
- backfilling an initial layer of the excavation with aggregate and compacting
- placing down a layer of a specially designed, hard-plastic mesh (called geogrid) at 500mm spacings to help stiffen the aggregate
- laying another layer of aggregate and compacting
- returning the site to its initial ground level with a 600mm layer of fill and topsoil.

This method has been applied on 10 adjoining properties, helping in understanding the issues around shared land ownership, access and underground services, and coordination, all of which are factors with many greater Christchurch properties. Waimakariri District Council has also contributed to the project, in particular where stormwater infrastructure has been a factor in the work and in liaising with residents.

As different soils and circumstances require different techniques, this method is one of a number of ground improvement methods EQC is testing through the land pilots (there are around 30 sites in Canterbury). This particular pilot has allowed EQC to see the 'real world' process for undertaking these repairs and, with the pilot now complete, insurers are now progressing with the dwelling rebuilds.

## HARDFILL UNLOADED

Unloading hardfill to be placed in Stage 1 of the hardfill raft. The white geotextile cloth stops the underlying silt from 'dirtying' the clean hardfill.



## LAYERS OF HARDFILL

Placing a layer of hardfill following placement of the geogrid layer. The sheetpiles around the perimeter ensure that the excavation remains stable. The geogrid rising up the sheetpiles will be wrapped back over after several layers of hardfill are placed.



## FINAL STAGES

Excavating (on the left) and filling (on the right) the final stage of hardfill raft construction. Hardfill stockpile in the mid-ground; topsoil stockpile in immediate foreground.



Phone: 0800 DAMAGE  
(0800 326 243)  
Web: www.eqc.govt.nz



# Youth voices to help guide the recovery

The results of the 2013 Youth Wellbeing Survey have provided decision makers with food for thought, highlighting areas of need as well as progress for young people aged between 12 and 24 years.

The survey asked more than 3,300 young people about their wellbeing, the impacts of the earthquakes on them, what is important to them in the recovery and their future plans. CERA Chief Executive Roger Sutton says it showed in particular that the loss of recreational places to go and hang out with friends or play sport has really affected young people.

"Seventy per cent of those surveyed tell us they have lost access to these places since the earthquakes, and the loss of spaces and sports and recreational facilities remain the top two stressors for young people."

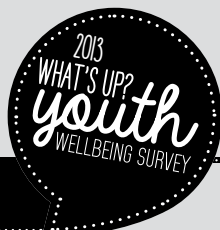
Mr Sutton says despite the loss of spaces and places, the Youth Wellbeing Survey shows that most young people are doing well in post-quake greater Christchurch and reveals positive wellbeing trends.

"Four out of five young people told us they have someone to turn to when they need help and over half feel a sense of community with others in their neighbourhood."

Two-thirds of respondents have emotional wellbeing scores that indicate they have good mental wellbeing. Roger Sutton says the survey results are a reminder of how important the wellbeing of our young people is now and for the future of greater Christchurch.

The Youth Wellbeing Survey was led by CERA in consultation with youth and health organisations in Christchurch and the Waimakariri and Selwyn districts. It was carried out from 23 September until 13 December 2013. For more information, go to [www.cera.govt.nz/youth-wellbeing-survey](http://www.cera.govt.nz/youth-wellbeing-survey)

The survey findings highlight themes and needs in three key areas: emotional wellbeing, development of spaces and places, and future plans and prospects.



## Call for fun ideas to help youth get through the Winter Chill

The greater Christchurch community is being invited to apply for funding to provide fun events for young people to help take the sting out of winter.

Winter Chill is a series of fun and exciting youth-led events and activities for young people aged 12 to 24 years. It has been developed in response to findings from the 2013 Youth Wellbeing Survey which highlighted young people's need for safe and enjoyable places to go and things to do.

A contribution of \$50,000 from Fletcher Building, along with up to \$100,000 from the Ministry of Youth Development's Canterbury Youth Initiatives Fund, has helped establish the Winter Chill event series. Young people and organisations are invited to come forward with proposals for events.

Applications for funding are now open. Contact [info@cera.govt.nz](mailto:info@cera.govt.nz) or go to [www.cera.govt.nz/winterchill](http://www.cera.govt.nz/winterchill) for application forms.

Winter Chill events and information will be updated at: [www.facebook.com/winterchillchch](https://www.facebook.com/winterchillchch) or follow Winter Chill on Instagram @winterchillchch

## AVAILABLE SUPPORT AFTER THE EARTHQUAKES

57%

FEEL A SENSE OF COMMUNITY WITH OTHERS IN THEIR NEIGHBOURHOOD



● STRONGLY AGREE ● AGREE ● DISAGREE ● STRONGLY DISAGREE

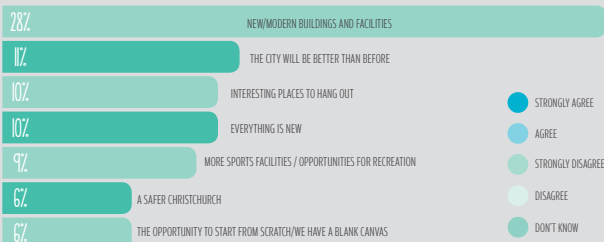


81%

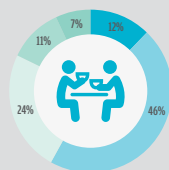
HAVE SOMEONE TO TURN TO FOR HELP IF FACED WITH A SERIOUS ILLNESS, INJURY OR FOR EMOTIONAL SUPPORT

● YES ● NO ● DON'T KNOW/UNSURE

## WHAT EXCITES YOU ABOUT THE REBUILD?

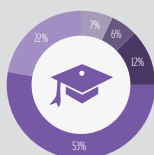


● STRONGLY AGREE ● AGREE ● STRONGLY DISAGREE ● DISAGREE ● DON'T KNOW

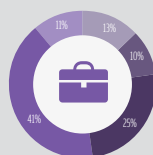


58% AGREE THERE ARE GOOD OPPORTUNITIES FOR SOCIAL ACTIVITIES AND ENTERTAINMENT IN GREATER CHRISTCHURCH

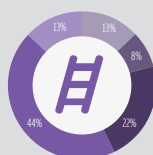
## OPPORTUNITIES IN GREATER CHRISTCHURCH



EDUCATION OPPORTUNITIES



EMPLOYMENT OPPORTUNITIES



CAREER ADVANCEMENT OPPORTUNITIES

● STRONGLY AGREE ● AGREE ● DISAGREE ● STRONGLY DISAGREE ● DON'T KNOW

75% AGREE THAT THERE ARE GOOD OPPORTUNITIES FOR EDUCATION FOR ME IN GREATER CHRISTCHURCH IF I WANTED TO STUDY OR TRAIN.

52% AGREE THAT THERE ARE GOOD EMPLOYMENT OPPORTUNITIES FOR ME IN GREATER CHRISTCHURCH IF I WANTED TO FIND EMPLOYMENT OR CHANGE JOBS.

57% AGREE THAT THERE ARE GOOD OPPORTUNITIES FOR ME TO ADVANCE WITHIN A CAREER WITHIN GREATER CHRISTCHURCH.

## IS CANTERBURY ALL RIGHT?

For a full summary of our latest research, visit: [allright.org.nz](http://allright.org.nz)

all right?



64% STILL GRIEVING FOR WHAT WE'VE LOST



82% HAVE A BETTER SENSE OF WHAT IS IMPORTANT TO THEM	35% HAVE MORE HEALTH ISSUES	47% WORRY ABOUT ANOTHER BIG EARTHQUAKE
--	-----------------------------	--

4 OF 5 CANTABRIANS VALUE PEOPLE MORE NOW

# Ongoing earthquake support for Cantabrians

The human recovery from the Canterbury earthquakes is the focus of the recently launched Community in Mind strategy.

The strategy highlights a commitment to focussing collectively on what individuals and communities need for effective psychosocial recovery over the next three to six years, and builds on support frameworks that have been in place since the September 2010 earthquake.

Community in Mind was launched by Associate Canterbury Earthquake Recovery Minister Nicky Wagner. She says the demand for psychosocial services in Canterbury has continued to rise, even though it is more than three years on from the earthquakes.

"The strategy will guide agencies, including non-governmental agencies and community groups across the region, to develop, target and coordinate their work programmes," Minister Wagner says.

"We have a lot of assistance available but for some people it's only now time to seek that out. What this strategy does is highlight the ongoing need, and point people to the right place to get support."

CERA and many partner organisations across Canterbury and nationally developed the strategy. The next step is to put together an action plan for priority areas.

The following activities are part of the developing Programme of Action.

## All Right?

All Right? Manager Sue Turner says the main message of the social marketing campaign is that there are things people can do to improve their wellbeing even if they are facing issues that are outside their control.

All Right? will keep reinforcing support messages including:

- it is all right to feel a myriad of different emotions at different times
- there are simple things you can do to help yourself, including asking for help.

## Red Cross

Red Cross Recovery Manager Sandra James says the organisation is particularly interested in supporting the people who are volunteering and working in recovery support services.

Red Cross aims to:

- deliver 1,000 training sessions for staff, volunteers and members
- offer 100 community information sessions to help people understand the recovery journey and suggest self-help techniques.

## Earthquake support

The Earthquake Support Coordination Service (ESC) helps residents work through the complex process of rebuilding their homes and lives.

Chair of ESC Governance Group Penny Taylor says more than 9,000 households have engaged in the service. About 1,800 cases are current.

The 0800 Canterbury Support Line (0800 777 846) receives hundreds of calls per month. Callers are offered support or referred on to other earthquake support services including counselling services.

## Relationships Aotearoa

Director Operations South Island Pablo Godoy says that by February 2014, Relationships Aotearoa had provided over 59,000 counselling sessions to 24,000 Cantabrians affected by the earthquakes.

To find out more about the support and assistance that is available, go to: <http://cera.govt.nz/support-and-assistance>

Psychosocial effects are how individuals feel and how they relate to each other.

International literature suggests psychosocial recovery after a disaster takes five to ten years.



**Community  
in Mind**

## Where is the funding coming from?

In the May 2014 Budget, Social Development Minister Paula Bennett announced \$13.5 million in funding over the next four years to enable ESC, the 0800 Canterbury Support Line and counselling services to continue.

The Government is investing \$2.3 million in the Canterbury Earthquake Temporary Accommodation Service's Matching and Placing service. To date, over 2,500 earthquake-affected families have been granted Temporary Accommodation Assistance (TAA).

Last month, Ministers Brownlee and Bennett announced that residents affected by earthquake-related flooding can apply for the TAA. Residents need to meet certain criteria in order to receive this assistance.

For more information, go to: [www.quakeaccommodation.govt.nz/apply-for-temporary-accommodation-assistance](http://www.quakeaccommodation.govt.nz/apply-for-temporary-accommodation-assistance) or call 0800 673 227.

## Sporting spaces, places and people at the core of new website

A new website has been launched that updates the community on what is happening with the recovery of sport and recreation in greater Christchurch following the earthquakes.

The website at [www.sportcanterbury.org.nz/spacesplacespeople/](http://www.sportcanterbury.org.nz/spacesplacespeople/) tells the stories of everyday sporting people in the community. It's also the place to go for details of the Sport and Recreation Recovery Programme for Greater Christchurch: work completed, work in progress and what is in the pipeline in Christchurch and the Selwyn and Waimakariri districts.

Visitors to the website can search according to geographical location and type of sport, and view the projects by mapped locations. They can also find out more on the timelines around central city anchor projects with sport and recreational components, such as Te Papa Ōtākaro/Avon River Precinct, Hagley Cricket Oval and the Metro Sports Facility. Most importantly, people can use the site to offer feedback on the Sport and Recreation Recovery Programme.

The programme was developed by the Sport and Recreation Earthquake Leadership Group, following consultation with the sector and key stakeholders.

## Did you know?

Sporting participation in greater Christchurch is back to 95 per cent of what it was before February 2011.

## Post-earthquake wins for sport and recreation in greater Christchurch:

- The establishment of Apollo High Performance Sports Centre at Jellie Park
- The opening of the Graham Condon Sport and Recreation Centre in Papanui
- Repair of the netball courts on Hagley Park
- The completion of the Washington Way Reserve Skate Park
- Repairs to Cowles Stadium
- The opening of new/redeveloped aquatic centres in Rolleston and Kaiapoi



2014 UC Education Mud Run. Photo supplied by Sport Canterbury.



# Canterbury's unique labour market conditions bode well for the future

The number of people flooding into our city from all over the world to join the rebuild is one of the region's hottest topics. However, this is only part of the labour market picture.

Our region is experiencing unique labour market conditions in more ways than one.

Canterbury Development Corporation's CEO Tom Hooper says Canterbury is the fastest-growing regional economy in the year to December 2013. While there is no doubt that the rebuild is driving many aspects of our economy, this growth is not just due to the construction sector.

"We have seen several other sectors deliver strong growth including: retail trade, accommodation and food services; manufacturing and electricity, gas, water and waste services; information media and telecommunications; health care and social assistance; and arts, recreation and other services.

"Our unemployment rate is now just above 3 per cent, which is one of the lowest in the country. Canterbury has been attracting a record number of workers, in particular, migrants and Kiwis returning to New Zealand – most of whom are arriving, in increasing numbers, from Australia, the United Kingdom, the Philippines and Ireland. But two key factors that few people are talking about, which are helping to address the labour shortfall, are the labour force participation rate and the number of people working while undertaking formal study.

"The labour force participation rate – which is normally 64 per cent to 67 per cent – is currently over 71 per cent, which is one of the highest in the country. Females and youth (aged 15–24 years) are the most significant groups

entering employment or making themselves available for work. This is a positive trend for our region's productivity; however, there have been concerns raised about the increased number of youth involved in unskilled work. Anecdotally there are worries that our region's youth are choosing well-paid unskilled work rather than education and career progression. However, our analysis suggests this is less of a concern than some people think it is," he says.

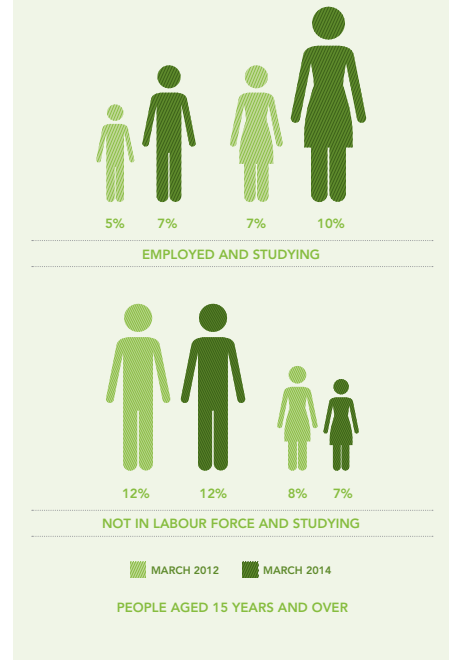
The number of people aged 15 years and over in Canterbury who are undertaking formal study (this includes both the employed and unemployed) has shifted from 35,900 in 2012 to 42,000 in 2014 (March quarter). This is a significant increase, indicating that youth are not only going into well-paid unskilled jobs in Canterbury, but are also more likely to be participating in either full-time or part-time formal study.

"With a strong performance in several of our region's business sectors, more people working than ever and an increased number of people in formal study, Canterbury's unique labour market conditions bode well for the future of our region," says Tom Hooper.

Sources: CDC, Statistics New Zealand, Infometrics Ltd

For more detailed information about the economy or to find out more about CDC, visit: [www.cdc.org.nz](http://www.cdc.org.nz)

## The number of people working while studying is increasing



## UPDATE FROM WAIMAKARIRI DISTRICT COUNCIL

# The pace is picking up for Waimakariri district's earthquake repairs

Work has started on the Kaiapoi West Infrastructure Repair project, a \$3.5 million task to replace damaged infrastructure in Hilton Street, Black Street, Raven Quay, Rich Street and Peraki Street. Work is also underway to build a new wastewater pump station, followed by the replacement of sewers, drainage and water pipes and reconstruction of roads and footpaths.

Ranui Mews, a 25-unit residential complex for the elderly, was officially opened by Mayor David Ayers in Kaiapoi on Thursday 12 June, replacing council-owned retirement housing that was red-zoned following the earthquakes. The complex consists of 21 single units and four double units and has received a strong seal of approval from residents.

Both the Rangiora Town Hall and the Kaiapoi Library, Museum and Service Centre complex are now taking

shape rapidly – both constructions are well above ground. The Kaiapoi Library, Museum and Service Centre is due for completion either at the end of this year or early next year. The Rangiora Town Hall – which will include a completely refurbished auditorium, a new 150-seat theatre, a dressing room, a function foyer, music studios and two cinemas – is due to open in February 2015.

A resolution on the Farmers department store in Rangiora was reached and the building is currently being demolished. It is to be replaced with a new 5,900-square-metre store, due to be opened early in 2016.

Preliminary plans have also been released by Waimakariri District Council for the precinct named 'North of High' – a block of land bounded by High Street, Durham Street, Blake Street and Good Street. Community consultation on this draft precinct plan will take place later this year.

The rebuild of Farmers and also of the Junction Hotel, further along Rangiora's High Street, will be cause for a huge collective sigh of relief from High Street shoppers as the safety fences that have lined the street for the past two years will start to disappear. ♻️



## UPDATE FROM CHRISTCHURCH CITY COUNCIL

# Plans progress for new Aranui youth and community facility

Christchurch City Council is pushing ahead with plans to build a new facility for youth and community groups in Aranui – its first new community centre to be built since the earthquakes.

The demolition of the Aranui Wainoni Family Centre, which is currently on the 31 Hampshire Street site where the new community centre will be built, is expected to be complete by the end of July.

Construction of the new facility is expected to begin early next year after detailed design work is completed and consents granted. The site will be grassed over until construction begins. The new facility is being built with funding support from Lions Club International (\$450,000) and the Christchurch Earthquake Appeal Trust (\$1 million).

General Manager Community Services Michael Aitken says, "The demolition of the family centre is the first tangible sign of progress residents will see. While it will be a number of months until construction begins on the site, residents can rest assured that plenty of work will be going on behind the scenes.

"An initial concept design has already been completed, which has been well received by residents, and we're now refining this and moving into more detailed planning for how

the facility will look. We'll be sharing these plans with residents and community groups for their input as we progress," says Mr Aitken.

### Other facilities news

- Lyttelton's **Norman Kirk Memorial Pool** has been demolished and the rebuild of the pool has begun. It is scheduled to finish in time for the pool to open for the 2014/15 summer season.
- The **Hei Hei Community Link** at 12 Wycola Avenue has been repaired and is now available for use. Repair and strengthening work is expected to get underway on the adjacent **Hei Hei Community Centre** soon.
- The demolition of two earthquake-damaged community facilities – the **Heathcote Community Centre** and the **Heathcote Voluntary Library** – begins in early July. These buildings will be replaced by a new combined community facility, at a Heathcote Valley location that is yet to be determined.
- An advisory group comprising representatives from eight community and sport organisations has been set up to consider a site for a new **Eastern Recreation and Sport Centre** in north-east Christchurch. ♻️

Christchurch  
City Council

Phone: 03 941 8999  
Web: [www.ccc.govt.nz](http://www.ccc.govt.nz)  
Email: [info@ccc.govt.nz](mailto:info@ccc.govt.nz)



Artist's impression: Initial concept designs for the Aranui Community Centre.

## UPDATE FROM ENVIRONMENT CANTERBURY

# The art of a smoke-free chimney

What could be better for the city and towns of greater Christchurch as they rebuild after the quakes than warm homes and less air pollution? Environment Canterbury is challenging wood-burner users this winter to learn how to burn smoke-free; helping clean up the air and continuing to allow the use of wood burners in the future.

Chimney smoke is just wood that hasn't burnt completely and is a waste of heat and money. Follow these steps to help you master getting more heat and less smoke.



### STEP 1

Use lots of kindling to get the fire going; don't skimp! The fire box should be about half full with kindling and paper, with the kindling cross-stacked to allow the air to move around. Wait until the kindling is turning black before you add any more wood.



### STEP 2

Use small logs next; too big and you'll choke the fire. Don't pack it too full; the fire still needs lots of air to burn hot. Leave the airflow on high and wait until the wood has burned down to half, with a good bed of hot embers, before adding the next load.



### STEP 3

You can now use bigger logs but each time you add more wood, you should only fill the box about three-quarters. It's OK to turn the airflow down once it's good and hot, but switch it back to high for about 15 minutes each time you reload.

Join the conversation and share your own tips at: [www.facebook.com/moreheatnosmoke](https://www.facebook.com/moreheatnosmoke) or find more information at: [www.letscleartheair.co.nz](http://www.letscleartheair.co.nz) ♻️

Environment  
Canterbury  
Regional Council  
Kaunihira Taiao ki Waitaha

Phone: (03) 353 9007  
Web: [www.ecan.govt.nz](http://www.ecan.govt.nz)

## UPDATE FROM SELWYN DISTRICT COUNCIL

# Successful first year for Selwyn Aquatic Centre

The Selwyn Aquatic Centre in Rolleston has completed a busy first year, with over a quarter of a million visits in its first 12 months.

The centre was opened on 24 June 2013, and celebrated its first birthday with a pool party on Sunday 22 June. Selwyn Mayor Kelvin Coe marked the event by cutting a birthday cake and the community joined in the fun, taking part in dive and colouring-in competitions, finding their way through obstacle courses and enjoying the inflatables.

The centre has had 258,000 admissions in its first year, exceeding its target of 250,000 admissions, and 4,450 enrolments have been taken for the centre's learn to swim programme.

"The centre has been extremely well used by the community and is a great asset to Selwyn," says Kelvin Coe.

The Aquatic Centre receives regular visits from Selwyn schools who use the facility for swim lessons and has also hosted several local schools' swim championships, along with the Canterbury Primary and Intermediate School Swimming Sports. The Selwyn Swim Club was recently established and is based at the centre. A masters group also swims there. ♻️

Selwyn  
DISTRICT COUNCIL

Phone: (03) 347 2800  
Web: [www.selwyn.govt.nz](http://www.selwyn.govt.nz)

# Update from Stronger Christchurch Infrastructure Rebuild Team (SCIRT)

## Progress in the central city

- SCIRT started infrastructure repairs in the central city in late 2012 and is now more than halfway through its work, with well over 60 per cent completed.
- April, May and June were the peak months of SCIRT's central city programme, but from the end of July that intensity is expected to reduce. That means you should experience fewer delays and detours in the central city from SCIRT works.
- Most of SCIRT's central city work will be completed in 2014, while structural repairs on bridges and some road repairs will go into 2015.

## What lies beneath? Chester Street West Pump Station

In June last year the excavation machines and cranes moved into Chester Street West, near Cranmer Square, to start work on a new wastewater pump station in a city council road reserve area.

The pump station, which was completed in May 2014, services over 300 households and businesses nearby. It is the largest pump station in the central city, pumping up to 100 litres of wastewater per second.

Final landscaping and road work in the area is nearing completion. Once finished, the pump station will be largely invisible and landscaped at ground level. People passing through the street will be unaware of what lies beneath the ground.

Getting the pump station in the ground was never going to be simple.

- A hole 14 metres long, 7 metres wide and 8 metres deep was excavated.
- Around 1,500 tonnes of soil was removed.
- 10 screw piles were installed to a depth of 25 metres.
- A half-metre-thick concrete base slab was constructed to support the pump station.
- Construction of the precast walls began offsite before being transported and installed.

The noisiest and most noticeable part of construction, especially for locals, was when 10 sheet piles were installed during the early stages and removed again towards the end. These were important to stop the sides of the excavation collapsing while construction took place.

### "Thank you residents"

SCIRT would like to thank all residents in the area for their patience while this essential work was undertaken.

The Chester Street West Pump Station during construction, showing the sheet piling in place.



An artist's impression of how the Chester Street West Pump Station will look once landscaping is finished and established. You would never know what lies beneath!



## City-wide progress

- By the end of July 2014, SCIRT expects to be around halfway through its city-wide work programme, which runs to the end of 2016.
- For the latest progress statistics, see the SCIRT website [www.strongerchristchurch.govt.nz](http://www.strongerchristchurch.govt.nz)

## Thank you

SCIRT thanks everyone for being patient as its crews make progress city-wide, and everyone who is going the extra mile to support their local businesses.

## "We might be back!"

SCIRT is often asked, "Why is SCIRT digging up my street again?"

Most of SCIRT's road works are about accessing damaged underground services (pipes), which are generally located in the road corridor.

Underneath Christchurch's roads are extensive networks of pipes and pumps that carry fresh water to our homes and businesses and take away our wastewater. There are also storm water pipes which channel the rain water that falls on rooftops and roads to streams and rivers.

In some parts of Christchurch, all of these pipes were damaged. Often SCIRT can't fix all of these pipes at the same time, while keeping traffic moving and the street open. Here's why.

### Location of the pipes

The diagram below shows that wastewater, storm water and fresh water pipes are located in different parts of the road. This makes it easy to access individual pipes if there are any faults. If the pipes were all laid on top of each other, to access the deepest one SCIRT would have to dig up the other pipes as well.



### Accessing and fixing the pipes

To fix all of the damaged pipes at the same time, SCIRT would need to dig a trench across the whole width of the road. This wouldn't leave any room for machinery to work next to the trenches. It would also leave no room for traffic to get past to access homes and businesses.

### What gets repaired first?

Following the earthquakes, SCIRT prioritised the design of the wastewater network so households and businesses had working toilets. Storm water and fresh water pipes are being repaired, as a general rule, after the wastewater pipes. The road surface is the last part to be repaired.

### Specialised crews

Often there are specialised crews for different pipes. If different crews were working in the same trench repairing different pipes at the same time, there would be limited space to complete the work.

### What about the road?

After wastewater repairs, if there are still other pipes to repair, a temporary road seal may be applied to keep traffic moving. Once work on all the pipes is finished, a permanent road repair takes place. ♻️



Phone: (03) 941 8999  
Email: [info@scirt.co.nz](mailto:info@scirt.co.nz)  
Web: [www.strongerchristchurch.govt.nz](http://www.strongerchristchurch.govt.nz)  
Twitter: @SCIRT\_info